



*14th
Annual*

BULL SALE

1:30 PM WEDNESDAY **APRIL 16** 2025

Bow Slope Shipping Association
Brooks, Alberta

111 Yearling Black Angus Bulls
57 Two Year Old Black Angus Bulls

Online Bidding at
DLMS.ca

66 RANCH LTD.
Kelsey Campbell
403.362.0672

Welcome

TO OUR 14TH ANNUAL SPRING BULL SALE!

We would like to thank you for taking the time to evaluate our program and cattle on offer. Whether this is your first time checking out our program or the 14th, we are truly humbled that you are. Thank you to all of our past bidders and buyers from our sales in 2024!

As you read through our catalog we hope you will understand that the cow at our place is very important, and as far as we are concerned, is where it all starts. We calve starting mid April, so as the green grass starts growing and cows start milking heavy, udder structure and teat size is extremely important to us. We take photos of all the cows udders as they calve so we have for future reference or have the ability to show you the dams udder of a bull you may be considering purchasing, when it is at its fullest, hours after she calves. Ease of flesh is also important here as our cows are expected to graze as long as they possibly can into and through the winter on sometimes low quality forage. Feet and leg structure is of upmost importance as well, some pastures here, cattle have to travel a large distance to forage and water themselves. We as well summer some cows on irrigated pastures so, some cows are spending the summer on wet, damp soil all summer. Hence, feet are put to the test because toes do not get a chance to wear off because of soft ground conditions.

Our bulls are grown at our ranch with longevity in mind. We believe in letting the bulls genetics grow them into working ranch bulls and not a high energy ration. The yearling bulls are backgrounded at our feedlot through the winter on a ration consisting of 15% hay, 10% whole oats, and the balance silage. The 2 year olds are wintered out in a field and fed a ration very similar to the yearlings, just minus the oats. Exercise through the winter we feel is very important for these bulls to be sound breeders for our customers in the upcoming breeding season.

We of course would love it if you can attend our sale in person, but understand how busy life can be, so if you are unable to attend sale day you will be able to view and bid on DLMS. Videos of the bulls will also include foot photos of each and every lot for sale. If you need to be on a phone sale day, please give us a call prior to the sale and you can be connected with one of our very capable sale staff members. If you have any questions about any of the lots on offer, or need to know more about the dam or grandams that raised any of the bulls please contact Malissa or Kelsey. We will tell or show you everything we know about any of the dams. The bulls are available for viewing anytime leading up to the sale day at the ranch. The bulls will also be available for viewing at Bow Slope Shipping Association in Brooks, Alberta in the afternoon of April 15th right up until sale time. Please come early on April 16th to view the bulls prior to the sale time at 1:30 PM sharp!

And whether you bid, purchase a bull or just come to evaluate our cattle for the first time please join us after the sale for a fantastic Angus steak and enjoy a little 66 Ranch "Country Hospitality!"

Thanks for your interest!

Kelsey, Malissa, Brett and Carter



SALE AT 1:30 PM SHARP

YEARLINGS: LOTS 1-21 & 79-168

TWO YEAR OLDS: LOTS 22-78





14th Annual

BULL SALE

WEDNESDAY, APRIL 16, 2025 at 1:30 PM

Bow Slope Shipping Association - Brooks, Alberta

Offering • 57 Two Year Old Black Angus Bulls • 111 Yearling Black Angus Bulls

VIEWING: Bulls can be viewed anytime before the sale at the ranch. Bulls will be available for viewing at Bow Slope Shipping Association on Tuesday, April 15.

PURCHASER'S RISK: Each animal becomes the risk of the purchaser as soon as sold. Insurance will be available sale day with Canadian Farm Insurance, Jill Wildman 1-780-305-1146.

BREEDER'S GUARANTEE: All two year old bulls and yearling bulls will be semen tested and physically examined by our local vet and sold with a breeders guarantee.

EVERY BULL at the sale will be sold with a 100% satisfaction guarantee.

SIGHT UNSEEN: In the event you are unable to attend the sale or use the online option, bids can be given to sale staff or owners with satisfaction guaranteed.

ACCOMMODATION: Heritage Inn & Suites 403-362-8688
Ramada 403-362-6440

66 RANCH LTD.



Brett, Malissa, Kelsey & Carter

KELSEY & MALISSA CAMPBELL

Box 66
Duchess, AB T0J 0Z0
Kelsey - 403-362-0672
Malissa - 403-501-9358



www.66RanchLtd.com

email: 66@66ranchltd.com

PLEASE JOIN US
AFTER THE SALE FOR
A LITTLE "COUNTRY HOSPITALITY"

AUCTIONEER:

Frank Jenkins - 403-627-6700

SALE STAFF:

Bow Slope Shipping Association
Diane Van Essen - 403-915-7156
Lachie McKinnon - 403-362-1825
Ryan Konneybelt - 403-892-6534
Justin Keeley - 403-627-6534
Danny Sewall - 403-363-0632

CAN'T MAKE IT ON SALE DAY?

Our sale will be broadcast online @ DLMS.ca



We are pleased to announce that we will have the services of DLMS. This will allow you to bid on the bulls via the internet. Of course, we would rather you attend the sale and our hospitality afterwards, but we well know today's world just keeps getting busier and busier! But, if for some reason you cannot attend, this gives you the opportunity to bid on the bulls at the live auction. Please remember to pre-register at www.dlms.ca 24 hrs. prior to the sale.

We also have available with this service is a live video of every animal in the sale. To view these videos go to our website www.66ranchltd.com and just click on view catalog. Videos are also available at www.dlms.ca. We encourage you if possible to view the cattle at the ranch prior to the sale.

Please contact Sarah Hasson at 1-306-681-5340 or Mark Shologan at 1-780-699-5082 with any questions or issues with registering for the sale.

- SALE DAY PHONES -

AUCTION MART 403-362-5521

KELSEY'S CELL 403-362-0672

MALISSA'S CELL 403-501-9358



PLEASE NOTE:

- All two year olds and yearlings are semen tested
- No bulls have been sold prior to the sale
- Bulls are sold in catalog order
- Updated weights & scrotal measurements will be available sale day
- 66 Ranch reserves the right to draw 250 straws of semen at our expense and at your convenience on any bull selling in the sale. For in-herd use only.

BERRY CREEK VETERINARY SERVICES

The two year old bulls offered for sale by 66 Ranch have all passed a breeding soundness examination and are classified as satisfactory potential breeders.

This year the yearling bulls offered for sale by 66 Ranch have passed a breeding soundness examination and are classified as satisfactory potential breeders. They have scrotal circumference measurements above the minimum requirement recommended by the Society of Theriogenology and Western Canadian Association of Bovine Practitioners.

In my opinion the bulls offered for sale are in excellent health and in ideal body condition.

Sincerely,
Kirby Finkbeiner, DVM

RECOMMENDED HEIFER BULLS

There are probably more than the 68 recommended "Heifer Bulls" at our sale. But we feel confident that the bulls with the **bold print BW** in the catalog will make for trouble free calving off your 1st calf heifers.

PERFORMANCE DATA

AOD: Age of Dam
 BW: Actual Birth Weight
 205D: Weaning weight in lbs. adjusted to 205 days
 365D: Yearling weight in lbs. adjusted to 365 days

EPD EXPLANATION

CE: Calving ease, predicts the ease with which a sire's calves will be born when bred to first-calf heifers. The higher the number, the higher the probability heifers will calve with no assistance.

BW: Birth weight, a prediction of a sire's ability to transmit birth weight to his progeny.

WW: Weaning weight, predictor of a sire's ability to transmit weaning growth to his progeny.

YW: Yearling weight, predictor of a sire's ability to transmit yearling growth to his progeny.

MILK: A predictor of a sire's genetic merit for milk and mothering ability as expressed in his daughters.

MCE: Maternal calving ease. The higher the number, the higher the probability that daughters will not require assistance at calving time.

Average EPDs for all Black Calves born in 2024
 These are the numbers to compare the bulls in the catalog to:

EPDs	CE	BW	WW	YW	MILK	MCE
	+3.4	+2.0	+55	+98	+23	+6.4

EPDs in this catalog are as of March 10/25

SIRES REPRESENTED

IN THIS CATALOG

- MERIT KINGPIN 32H
- MERIT RANCH WATER 1067J
- HF RISKY BUSINESS 135G
- 66 CHISM 153H
- 66 CHISM 1D
- 66 ALLIANCE 91J
- 66 ALLIANCE 172F
- 66 CHISM 48G
- V D A R CEDAR WIND 8111
- 66 CHISM 32J
- MERIT KINGSMAN 8030F

- MERIT MCLAREN 8020F
- MERIT INCREDIBLE 1020J
- STERLING PACIFIC 904
- MERIT INVESTMENT 1054J
- W SUNRISE EXECUTIVE LAW 507H
- HOOVER COWBOY LOGIC X22
- HOOVER NO DOUBT X6
- MC CUMBER 5005 TITANIUM 1004
- 66 ALLIANCE 247H
- 66 ALLIANCE 17Z

- MERIT STONEY CREEK 7035E
- BURNETT REMEDY 45H
- MERIT INTENTIONAL 2047K
- 66 ABSOLUTE 120K
- MERIT THUNDERBIRD 2071K
- W SUNRISE DUECE 773K
- MC CUMBER BELIEVE 1169
- MERIT THUNDERSTORM 1138J
- KR MOJO 8520
- DURALTA 8020 ARMORAL 146K
- MERIT SHIELD 2030K



YEARLING BULLS

LOTS
1-21

Visit WWW.66RANCHLTD.COM for sale updates



YEARLING
1

66 KINGPIN 72M

MALE CKM 72M 2394791 APRIL 19 2024

MERIT KINGPIN 32H 2149400

66 IDELETTE 286H 2171444

MERIT KINGSMAN 8030F
MERIT BLACKCLASS 6060D

S A V RENOVATION 6822
66 IDELETTE 240B

AOD	BW	205D	EPDs	CE	BW	WW	YW	MILK
5	76	730		+6.0	+1.7	+70	+114	+24



286H

DAM OF
LOT 1

WHY WE HOLD OUR SALE LATER IN APRIL

We, along with our veterinarian's advice, believe the yearling bulls will be old enough to semen test prior to the sale. By doing this, hopefully it will make your & our lives easier by the bulls being able to go to their new homes directly after the sale or shortly thereafter.

BULLS SELL IN CATALOG ORDER

Updated weights & scrotal measurements available Sale Day

REFERENCE SIRE



30 sons sell

MERIT KINGPIN 32H

MALE MSL 32H 2149400 FEBRUARY 06 2020

MERIT KINGSMAN 8030F 2063014

MERIT BLACKCLASS 6060D 1926034

BAR S RANGE BOSS 4002
MERIT SOCIALITE 48X

MERIT STONEY CREEK 4023
MERIT BLACKCLASS 1184

EPDs	CE	BW	WW	YW	MILK	MCE
	+1.0	+3.8	+67	+105	+26	+7.0

A walking bull at the ranch purchased from the super people at Merit Cattle Co. Trent and Janelle Leibreich. We purchased him because he was in our eyes one of the longest, deepest, yet moderate herd bulls in their pen that season. But the determining factor for us deciding to own him was the maternal value he would bring. 6 of the 7 cows on the front of the pedigree were all raised at Merit. Proven, predictable maternal breeding bull here. 32H has and will continue to be bred to some of our top females at our place. Be sure to plan to retain all the heifer calves from 32H, they will be in the replacement pen and in the cow herd for a



KINGPIN'S FEET

long time. 32H sires calves with exceptional foot quality. Not unexpected by the foot quality his dam has, as near a perfect foot with exceptional heel as you can find. His dam 6060 has produced many quality herdsires selling to multiple well respected seedstock producers besides Kingpin 32H himself! Bull calves average birthweight is 84 lbs. Heifer calves is 79 lbs.

YEARLING SONS SELL AS LOTS 1-10 & 124-135
TWO YEAR OLD SONS SELL AS LOTS 40-47

DAM
6060D





Lot 2

YEARLING
2

66 KINGPIN 88M
MALE CKM 88M 2394796 APRIL 20 2024

MERIT KINGPIN 32H 2149400

MERIT KINGSMAN 8030F
MERIT BLACKCLASS 6060D

66 LASSIE 21B 1805716

BAD LANDS FORTE 406X
BAD LANDS LASSIE 1138Y

AOD	BW	205D	EPDs	CE	BW	WW	YW	MILK
11	88	699		+4.0	+2.4	+57	+92	+29



Lot 4

YEARLING
4

66 KINGPIN 183M
MALE CKM 183M 2394830 APRIL 24 2024

MERIT KINGPIN 32H 2149400

MERIT KINGSMAN 8030F
MERIT BLACKCLASS 6060D

66 BARBARA ROSE 391F 2058645

V D A R CEDAR WIND 8111
66 BARBARA ROSE 4D

AOD	BW	205D	EPDs	CE	BW	WW	YW	MILK
7	85	713		+7.0	+1.1	+57	+90	+24



Lot 3

YEARLING
3

66 KINGPIN 178M
MALE CKM 178M 2394829 APRIL 24 2024

MERIT KINGPIN 32H 2149400

MERIT KINGSMAN 8030F
MERIT BLACKCLASS 6060D

66 BB BLOSSOM 191D 1930127

66 ALLIANCE 17Z
BAD LANDS BB BLOSSOM 5076R

AOD	BW	205D	EPDs	CE	BW	WW	YW	MILK
9	84	702		+3.0	+3.0	+66	+104	+22



Lot 5

YEARLING
5

66 KINGPIN 22M
MALE CKM 22M 2394768 APRIL 14 2024

MERIT KINGPIN 32H 2149400

MERIT KINGSMAN 8030F
MERIT BLACKCLASS 6060D

66 DUCHESS 199G 2121895

V D A R CEDAR WIND 8111
66 DUCHESS 494E

AOD	BW	205D	EPDs	CE	BW	WW	YW	MILK
6	80	619		+7.0	+1.4	+46	+78	+27



21B - DAM OF LOT 2



191D - DAM OF LOT 3



391F - DAM OF LOT 4



Lot 6

YEARLING
6

66 KINGPIN 170M

MALE CKM 170M 2394824 APRIL 24 2024

MERIT KINGPIN 32H 2149400

MERIT KINGSMAN 8030F
MERIT BLACKCLASS 6060D

66 LADY BIRD 7F 2058427

V D A R CEDAR WIND 8111
66 LADY BIRD 169D

AOD	BW	205D	EPDs	CE	BW	WW	YW	MILK
7	87	698		+1.0	+3.3	+58	+92	+26



Lot 8

YEARLING
8

66 KINGPIN 25M

MALE CKM 25M 2394770 APRIL 15 2024

MERIT KINGPIN 32H 2149400

MERIT KINGSMAN 8030F
MERIT BLACKCLASS 6060D

66 ANNE 9055G 2129292

WERNER FLAT TOP 4136
BAD LANDS ANNE 131X

AOD	BW	205D	EPDs	CE	BW	WW	YW	MILK
6	78	570		+10.0	+0.4	+46	+79	+23



Lot 7

YEARLING
7

66 KINGPIN 245M

MALE CKM 245M 2394850 APRIL 27 2024

MERIT KINGPIN 32H 2149400

MERIT KINGSMAN 8030F
MERIT BLACKCLASS 6060D

66 DUCHESS 178G 2121890

66 ALLIANCE 17Z
66 DUCHESS 143A

AOD	BW	205D	EPDs	CE	BW	WW	YW	MILK
6	78	642		+6.0	+1.7	+59	+93	+24



Lot 9

YEARLING
9

66 KINGPIN 135M

MALE CKM 135M 2394812 APRIL 22 2024

MERIT KINGPIN 32H 2149400

MERIT KINGSMAN 8030F
MERIT BLACKCLASS 6060D

SOUTH FORK DUCHESS 16X 1591944

SHALOM WAIGROUP 519/94
DEER RIVER DUCHESS 466P

AOD	BW	205D	EPDs	CE	BW	WW	YW	MILK
15	83	644		+6.0	+1.5	+43	+71	+21



199G - DAM OF LOT 5



7F - DAM OF LOT 6



16X - DAM OF LOT 9



YEARLING
10

66 KINGPIN 61M
MALE CKM 61M 2394784 APRIL 18 2024

MERIT KINGPIN 32H 2149400

MERIT KINGSMAN 8030F
MERIT BLACKCLASS 6060D

66 PEARL 193F 2058539

V D A R CEDAR WIND 8111
66 PEARL 537D

AOD	BW	205D	EPDs	CE	BW	WW	YW	MILK
7	76	620		+8.0	+0.4	+51	+78	+27

CALVING EASE BULLS BW IN **BOLD** PRINT

Dam Photos

After conversations between Malissa and I over the past couple years, we thought being as we were such a maternal based program people may appreciate seeing some photos of our females in our catalogs. These photos may not be the traditional combed up, blown off "Pretty" pictures most people put in their catalogs. These are pictures of our cows in their working clothes.

For any of you that are not completely familiar with our program, we take a photo of all our cows when we tag their newborn calf. This way we can see their bags anytime of the year, and are available to show all of you our cows when their bags are at their fullest, moments after they calve.



Thank You!!

TO OUR 2024 CUSTOMERS

- | | | | |
|------------------------------------|------------------------------|--------------------------------------|----------------------------|
| 9 Bar Ranch Co. Ltd. **** | Kenneth Friemark ** | MWA Farms ** | Tateson Ranching **** |
| 90 Bar Ranch Ltd.** | Susana Friessen **** | Macpherson Cattle Company | TNT Cattle Co. Ltd **** |
| C & L Beasley Cattle **** | Freeway Angus * | Blake Mulvey **** | Kevin Torkelson |
| Belmac Land and Cattle Ltd. ** | GTA Ranch Inc. | Norm and Tammy McNeil **** | Ray Torkelson **** |
| Bill & Betty Bildersheim * | Goldridge Farming Co. * | McNiven Cattle Company **** | Valley Blossom Ranch * |
| Bluefield Grazing ** | Granum Colony **** | Newton Lake Ranch Ltd. **** | Venture Ranches ** |
| Bow Canyon Ranch Ltd. | Myles Gray ** | Newell Grazing Ass. *** | JV Land & Cattle **** |
| Bow City Colony Farming Co. | Guyster Farms | New Century Ranch | Desire Veno |
| Burke Creek Ranch Ltd. *** | Tyler Haraga ** | Ranch 71 Ltd. *** | Cornelius Wall * |
| Butcher Creek Grazing Coop Ltd. ** | Curtis & Heather Harbinson * | Bruce and Connie Pierson **** | Waldbauer Ranching Ltd. ** |
| Cactus Coulee Ranch | Hironaka Farms **** | Pine Haven Farms Inc. | Kelly Walker |
| Carter Farms Ltd. *** | Ryan Hofer | Troy Rutschmann ** | Washada Ranch Ltd. *** |
| Carolside Ranching **** | Justin Hok ** | Sammons Land & Cattle Company * | Wenbourne Ranch Ltd. *** |
| Clinton Christianson | Nate and Jen Horner ** | Owen Salisbury | Wever Farms Ltd **** |
| Tim Christianson **** | Craig and Elaine Horner *** | Cody & Nora Schock | Pedro Wiebe |
| Coal Creek Ranching Ltd. | Clay & Delta Hudec * | Scheibner Feeders ** | Wildcat Cattle ** |
| Deschamps Ranching Ltd. **** | Larry and Marilyn Hudec ** | Sewall Bros ** | White Moose Ranch |
| Diamond V Ranch **** | Jenkins Lazy U Ranch **** | Ken Sharp * | Bill Woodward |
| Dubeau Ranching Ltd. | Alan Jones *** | Ken & Sylvia Simpson * | Gordon Wudrich *** |
| Russel Douglass ** | Murray Kirby ** | Skibsted Cattle Ltd. * | YU Cattle Company ** |
| Dryfork Ranch **** | Knudsen Farms Ltd. * | Spur Ranching ** | |
| East & West Ranching Co. ** | Tannis Longshore | Springview Farms Ltd. ** | * Repeat customers |
| Elkhorn Stock Ranch * | Brad Lockhart* | Springview Colony | ** 5 or more Bulls |
| Estuary Colony | Lomond Grazing Association | Chris Tertault & Diane Declercq **** | *** 10 or more Bulls |
| | | | **** 20 or more Bulls |

REFERENCE SIRE



20 sons sell

MERIT RANCH WATER 1067J

MALE GML 1067J 2211703 FEBRUARY 13 2021

BLAIR'S THUNDERSTORM 807F 2087267

PM THUNDERSTRUCK 22'13
S A V MADAME PRIDE 0151

MERIT SOCIALITE 8196F 2066448

BAR S RANGE BOSS 4002
MERIT SOCIALITE 3060

EPDs	CE	BW	WW	YW	MILK	MCE
	+11.0	-1.9	+46	+75	+25	+13.0

A walking bull purchased at Merit Cattle Co. Ranchwater stands on a foot as good as you will find. All four feet have toes that are straight as a ruler and he has as much heel under him as you can put on a foot. You will wear out a pickup truck driving around the countryside to try and find a bull with a foot as strong as this bull! He is a sleep all night heifer bull with a dam behind him that fleshes up as easy as you can make one. For a sure fire heifer bull, he sure puts a hip, middle and a topline onto his progeny. The docility of Ranchwater is unmatched. Bull calves average birthweight is 74 lbs. Heifer calves is 70 lbs.

YEARLING SONS SELL AS LOTS 11-18 & 136-144
TWO YEAR OLD SONS SELL AS LOTS 48-51



RANCH WATER'S FEET



DAM
8196F



425C
DAM OF
LOT 12



Lot 11

YEARLING
11

66 RANCH WATER 92M

MALE CKM 92M 2394798 APRIL 20 2024

MERIT RANCH WATER 1067J 2211703

BLAIR'S THUNDERSTORM 807F
MERIT SOCIALITE 8196F

66 ROSEBUD 233J 2231319

66 CHISM 1D
66 ROSEBUD 259A

AOD	BW	205D	EPDs	CE	BW	WW	YW	MILK
4	72	686		+9.0	-0.9	+59	+96	+19



233J
DAM OF
LOT 11



Lot 12

YEARLING
12

66 RANCH WATER 176M

MALE CKM 176M 2394827 APRIL 24 2024

MERIT RANCH WATER 1067J 2211703

BLAIR'S THUNDERSTORM 807F
MERIT SOCIALITE 8196F

66 LADY 425C 1867478

66 ALLIANCE 17Z
SOUTH FORK LADY 136Z

AOD	BW	205D	EPDs	CE	BW	WW	YW	MILK
10	82	640		+5.0	+1.3	+49	+79	+23



Lot 13

**YEARLING
13**

66 RANCH WATER 36M

MALE CKM 36M 2394773 APRIL 16 2024

MERIT RANCH WATER 1067J 2211703

BLAIR'S THUNDERSTORM 807F
MERIT SOCIALITE 8196F

66 IDELETTE 356K 2291920

66 ALLIANCE 172F
66 IDELETTE 367G

AOD	BW	205D	EPDs	CE	BW	WW	YW	MILK
3	82	660		+4.0	+1.6	+58	+99	+22



Lot 15

**YEARLING
15**

66 RANCH WATER 199M

MALE CKM 199M 2394835 APRIL 25 2024

MERIT RANCH WATER 1067J 2211703

BLAIR'S THUNDERSTORM 807F
MERIT SOCIALITE 8196F

66 PRINCESS 341K 2286722

DDA EMBLAZON 27C
66 PRINCESS 42D

AOD	BW	205D	EPDs	CE	BW	WW	YW	MILK
3	74	652		+8.0	+0.2	+52	+84	+23



Lot 14

**YEARLING
14**

66 RANCH WATER 239M

MALE CKM 239M 2404215 ET APRIL 27 2024

MERIT RANCH WATER 1067J 2211703

BLAIR'S THUNDERSTORM 807F
MERIT SOCIALITE 8196F

MERIT FLORA 4120 1796474

BAR-E-L IRON WILL 32Y
MERIT FLORA 4105

AOD	BW	205D	EPDs	CE	BW	WW	YW	MILK
11	77	674		+3.0	+0.9	+52	+80	+24



Lot 16

**YEARLING
16**

66 RANCH WATER 278M

MALE CKM 278M 2394861 APRIL 29 2024

MERIT RANCH WATER 1067J 2211703

BLAIR'S THUNDERSTORM 807F
MERIT SOCIALITE 8196F

66 LASSIE 457K 2299228

HA COWBOY UP 5405C
66 LASSIE 383D

AOD	BW	205D	EPDs	CE	BW	WW	YW	MILK
3	90	651		+5.0	+2.0	+58	+101	+24



356K - DAM OF LOT 13



4120 - ET DAM OF LOTS 14, 56 & 57



457K - DAM OF LOT 16



Lot 17

YEARLING
17

66 RANCH WATER 143M

MALE CKM 143M 2394814 APRIL 23 2024

MERIT RANCH WATER 1067J 2211703

BLAIR'S THUNDERSTORM 807F
MERIT SOCIALITE 8196F

66 LASS 413K 2291943

66 CEDAR RIDGE 151F
66 LASS 77G

AOD	BW	205D	EPDs	CE	BW	WW	YW	MILK
3	70	559		+10.0	-0.7	+42	+74	+25



Lot 18

YEARLING
18

66 RANCH WATER 52M

MALE CKM 52M 2394781 TWIN APRIL 17 2024

MERIT RANCH WATER 1067J 2211703

BLAIR'S THUNDERSTORM 807F
MERIT SOCIALITE 8196F

66 HAPPENINGS 151J 2231286

HF RISKY BUSINESS 135G
DEER RIVER HAPPENINGS 51W

AOD	BW	205D	EPDs	CE	BW	WW	YW	MILK
4	64	543		+10.0	-0.6	+46	+80	+23

- SIGHT UNSEEN PURCHASES -
YOUR SATISFACTION
IS GUARANTEED

Contact 66 Ranch Ltd. or any of our Sales Staff



151J
DAM OF
LOT 18



YOU COULD WIN A 66 RANCH HEIFER

The Lot Number of every bull purchase goes into a draw after the sale.
The drawn Lot # wins!



OPTION A - Pick one out of a pen of 10 hand selected 66 Ranch open commercial heifers to take home and put in your herd
or - **OPTION B** - A \$2,500 cheque made out to you!



**YEARLING
19**

66 COWBOY UP 82M

MALE CKM 82M 2394792 APRIL 19 2024

HA COWBOY UP 5405C
HF TIBBIE 282A

HOOVER COUNSELOR N29
66 MIDDLEBROOK 608C

HF RISKY BUSINESS 135G 2093092

66 MIDDLEBROOK 369H 2171483

AOD	BW	205D	EPDs	CE	BW	WW	YW	MILK
5	71	747		+12.0	-0.9	+65	+116	+26



369H

DAM OF
LOT 19



168F

DAM OF
LOT 20

**YEARLING
20**

66 COWBOY UP 48M

MALE CKM 48M 2394779 APRIL 17 2024

HA COWBOY UP 5405C
HF TIBBIE 282A

66 CHISM 1D
SOUTH FORK ROSEBUD 51X

HF RISKY BUSINESS 135G 2093092

66 ROSEBUD 168F 2058523

AOD	BW	205D	EPDs	CE	BW	WW	YW	MILK
7	76	683		+10.0	+0.2	+66	+115	+14

**YEARLING
21**

66 COWBOY UP 256M

MALE CKM 256M 2394854 APRIL 28 2024

HA COWBOY UP 5405C
HF TIBBIE 282A

V D A R REALLY WINDY 4097
BAD LANDS LADY FANNY 1107Y

HF RISKY BUSINESS 135G 2093092

66 LADY FANNY 442A 1755617

AOD	BW	205D	EPDs	CE	BW	WW	YW	MILK
12	80	726		+6.0	+2.0	+61	+107	+21

REFERENCE SIRE



5 sons sell

HF RISKY BUSINESS 135G

MALE HAMI 135G 2093092 JANUARY 28 2019

HA COWBOY UP 5405 1937042

HA OUTSIDE 3008
HA BLACKCAP LADY 1602

HF TIBBIE 282A 1753795

HF TIGER 5T
HF TIBBIE 103T

EPDs	CE	BW	WW	YW	MILK	MCE
	+9.0	+1.2	+67	+122	+21	+6.0

An extremely deep sided walking bull purchased from Hamilton Farms selected for his calving ease and extremely good performance. His dam is a favorite at Hamilton's, moderate framed with an excellent level udder. We sadly lost 135G in the winter of 2021 to an injury, fortunately though we have semen in the tank to utilize his genetics for years to come. Bull calves average birthweight is 80 lbs. Heifer calves is 76 lbs.

TWO YEAR OLD SONS SELL AS LOTS 54-55



Lot 20



Lot 21

GOOD COWS RAISE GOOD CALVES!!



What we expect of a cow at 66 Ranch:

- She must calve on time
- She must nurse her calf on her own for her whole life
- She must have proper feet and legs to allow her to travel around our place into her teen years
- She must be able to carry enough flesh throughout the year to be able to graze right until February without added protein (if winter allows it)
- She must be fertile enough to get bred either by 21 days of A.I. and 21 days of a walking bull. She's got 42 days to get bred!
- She must wean a quality calf, if it's a bull calf, needs to be one we can sell to our commercial customers, or a heifer calf, to be quality enough to go to our replacement pen



CKM 6F



CKM 2B



CKM 403C



CKM 191D



CKM 169F



CKM 411C



CKM 411D



CKM 74Z



CKM 99G



CKM 359C



CKM 151A



CKM 391E



TWO YEAR OLD BULLS

LOTS
22-78



2 YR OLD
22

66 CHISM 153H 2171720

66 LASSIE 161B 1805825

AOD	BW	205D	365D	EPDs	CE	BW	WW	YW	MILK
11	83	781	1158		+6.0	+0.5	+63	+98	+22

66 CHISM 649L

MALE CKM 649L 2343314 JUNE 04 2023

66 CHISM 1D
66 LASSIE 21B

CONNEALY THUNDER
BAD LANDS LASSIE 6040S



2 YR OLD
23

66 CHISM 153H 2171720

66 MIDDLEBROOK 553G 2113018

AOD	BW	205D	365D	EPDs	CE	BW	WW	YW	MILK
6	83	794	1181		+4.0	+1.8	+66	+104	+20

66 CHISM 653L

MALE CKM 653L 2343315 JUNE 06 2023

66 CHISM 1D
66 LASSIE 21B

COLE CREEK SEVEN SON 1394
66 MIDDLEBROOK 331B

REFERENCE SIRE



66 CHISM 153H

MALE CKM 153H 2171720 APRIL 22 2020

66 CHISM 1D 1929946

66 LASSIE 21B 1805716

STUART CHISM 82A
66 DUCHESS 249A

BAD LANDS FORTE 406X
BAD LANDS LASSIE 1138Y

EPDs	CE	BW	WW	YW	MILK	MCE
	+11.0	-0.7	+63	+98	+14	+13.0

A walking bull raised at 66 Ranch. 153H is absolutely the best son raised to date by our sire "1D." 153H has been a crowd favorite at our place by people who have stopped by. He has as much style as any, super hip, big top and fantastic head on 153H. His dam 21B has year after year cranked out some of our top calves. Bull calves average birthweight is 79 lbs. Heifer calves is 73 lbs.



DAM
21B

ALL BULLS

HAVE BEEN SEMEN TESTED &
BREEDING SOUNDNESS EVALUATED

WE WELCOME YOUR VISIT TO VIEW THE BULLS AT 66 RANCH PRIOR TO THE SALE



2 YR OLD
24

66 CHISM 621L

MALE CKM 621L 2343311 MAY 27 2023

66 CHISM 153H 2171720

66 CHISM 1D
66 LASSIE 21B

66 ANNE 124D 1930061

V D A R CEDAR WIND 8111
66 ANNE 119B

AOD	BW	205D	365D	EPDs	CE	BW	WW	YW	MILK
9	74	677	1082		+9.0	-0.3	+50	+77	+22

2 YR OLD
25

66 CHISM 643L

MALE CKM 643L 2343313 JUNE 01 2023

66 CHISM 153H 2171720

66 CHISM 1D
66 LASSIE 21B

66 BLACKBIRD 233G 2121919

66 ALLIANCE 17Z
66 BLACKBIRD 83C

AOD	BW	205D	365D	EPDs	CE	BW	WW	YW	MILK
6	86	677	1088		+3.0	+2.0	+64	+101	+16



124D
DAM OF
LOT 24



2 YR OLD
26

66 CHISM 642L

MALE CKM 642L 2343312 MAY 31 2023

66 CHISM 153H 2171720

66 CHISM 1D
66 LASSIE 21B

66 BLANCHE 4F 2058424

STUART CHISM 82A
SYDGEN BLANCHE 1221

AOD	BW	205D	365D	EPDs	CE	BW	WW	YW	MILK
7	77	612	990		+10.0	-0.4	+51	+79	+15

LOOKING FOR LONGEVITY?

A cow at 66 Ranch is under great scrutiny from her first calf and continuing on her entire life at our place. If they show any imperfections with feet, udder or disposition they are culled right there on the spot. Any cow 4 or 5 has been scrutinized pretty thoroughly. So with that being said, we are pretty proud to have 98 cows that raised bulls in this sale being 6 years old and older, all the way up to 16 years of age!



Internet Bidding Available

DLMS
www.dlms.ca
Direct Livestock Marketing Systems

For more information call:
Mark Shologan 780-699-5082 or Purebred Team 780-991-3025



2 YR OLD
27

66 CHISM 1D 1929946

DEER RIVER BARBARA 55W 1500547

AOD	BW	205D	365D	EPDs	CE	BW	WW	YW	MILK
16	84	680	1104		+6.5	+1.0	+59	+91	+9



2 YR OLD
28

66 CHISM 1D 1929946

BAD LANDS GEORGINA 1111Y 1615388

AOD	BW	205D	365D	EPDs	CE	BW	WW	YW	MILK
14	93	716	1099		-2.0	+4.6	+60	+84	+9



55W

DAM OF
LOT 27



1111Y

DAM OF
LOT 28

REFERENCE SIRE



9 sons sell

66 CHISM 1D

MALE CKM 1D 1929946 APRIL 03 2016

STUART CHISM 82A 1736988

S CHISM 6175
STUART MISS ROSE 22U

66 DUCHESS 249A 1738898

BAD LANDS DAQUANTAE 26L
BAD LANDS DUCHESS 9025W

EPDs	CE	BW	WW	YW	MILK	MCE
	+5.0	+2.2	+75	+114	-3	+13.0

A walking bull raised at 66 Ranch. What a fortunate thing happening to us with this bull! He checks all the boxes, very moderate birth, great performance, and awesome looking female progeny, great scrotal, feet are superb, natural ease of flesh. We are very, very high on these 1D bred progeny. The rancher's kind of cattle out of this bull! We have 384 progeny registered in our herd. Bull calves average birthweight is 83 lbs. Heifer calves is 77 lbs.

DAM
249A





2 YR OLD
29

66 CHISM 22L

MALE CKM 22L 2343116 APRIL 15 2023

66 CHISM 1D 1929946

STUART CHISM 82A
66 DUCHESS 249A

66 BARBARA 150E 1997203

V D A R CEDAR WIND 8111
BAD LANDS BARBARA 38X

AOD	BW	205D	365D	EPDs	CE	BW	WW	YW	MILK
8	60	644	991		+14.0	-2.9	+49	+66	+8

2 YR OLD
30

66 CHISM 103L

MALE CKM 103L 2343143 APRIL 22 2023

66 CHISM 1D 1929946

STUART CHISM 82A
66 DUCHESS 249A

66 COUNTESS 302B 1805963

66 ALLIANCE 17Z
BAD LANDS COUNTESS 9085W

AOD	BW	205D	365D	EPDs	CE	BW	WW	YW	MILK
11	85	627	987		+2.0	+3.3	+58	+91	+7



150E
DAM OF
LOT 29



302B
DAM OF
LOT 30



129F
DAM OF
LOT 31



2 YR OLD
31

66 CHISM 78L

MALE CKM 78L 2343134 APRIL 21 2023

66 CHISM 1D 1929946

STUART CHISM 82A
66 DUCHESS 249A

66 COUNTESS 129F 2058503

HOOVER DAM
66 COUNTESS 297D

AOD	BW	205D	365D	EPDs	CE	BW	WW	YW	MILK
7	80	669	1066		+8.0	+0.5	+56	+89	+11

LOOK FOR THE
'66' FREEZE
BRAND



BULL MANAGEMENT

We do not believe in pushing our 2 year old or yearling bulls.
They are all carefully grown into herd sires.



2 YR OLD
32

66 CHISM 15L

MALE CKM 15L 2343113 APRIL 14 2023

66 CHISM 1D 1929946

STUART CHISM 82A
66 DUCHESS 249A

66 COUNTESS 503A 1760808

BAD LANDS FORTE 10Y
BAD LANDS COUNTESS 214M

AOD	BW	205D	365D	EPDs	CE	BW	WW	YW	MILK
12	70	616	979		+8.0	+0.6	+47	+68	+11

2 YR OLD
34

66 CHISM 147L

MALE CKM 147L 2343160 APRIL 24 2023

66 CHISM 1D 1929946

STUART CHISM 82A
66 DUCHESS 249A

66 LADY FANNY 568B 1814504

BAD LANDS CANUCK 44Y
BAD LANDS LADY FANNY 9010W

AOD	BW	205D	365D	EPDs	CE	BW	WW	YW	MILK
11	80	615	1034		+5.0	+2.4	+56	+90	+5



2 YR OLD
33

66 CHISM 143L

MALE CKM 143L 2343158 APRIL 24 2023

66 CHISM 1D 1929946

STUART CHISM 82A
66 DUCHESS 249A

66 BARBARA 603G 2113029

66 RIGHT TIME 326D

AOD	BW	205D	365D	EPDs	CE	BW	WW	YW	MILK
6	81	679	1010		+6.0	+1.4	+59	+80	+8

2 YR OLD
35

66 CHISM 297L

MALE CKM 297L 2343211 APRIL 30 2023

66 CHISM 1D 1929946

STUART CHISM 82A
66 DUCHESS 249A

66 MARCIA 9008G 2112972

S A V SUPERCHARGER 6813
66 MARCIA 5061C

AOD	BW	205D	365D	EPDs	CE	BW	WW	YW	MILK
6	78	597	1069		+4.0	+2.1	+61	+103	+7



503A - DAM OF LOT 32



603G - DAM OF LOT 33



9008G - DAM OF LOT 35



Lot 36

2 YR OLD
36

66 ALLIANCE 641L

MALE CKM 641L 2347527 MAY 30 2023

66 ALLIANCE 91J 2231450

66 ALLIANCE 17Z
66 ROSEBUD 6049D

66 BLACKBIRD 82E 2007977

COLE CREEK BLACK CEDAR 1100
66 BLACKBIRD 619C

AOD	BW	205D	365D	EPDs	CE	BW	WW	YW	MILK
8	86	741	1166		+4.0	+1.9	+58	+98	+25



447C

DAM OF
LOT 37



Lot 37

2 YR OLD
37

66 ALLIANCE 594L

MALE CKM 594L 2343308 MAY 23 2023

66 ALLIANCE 172F 2057474

66 ALLIANCE 17Z
BAD LANDS LASSIE 4008P

66 QUEEN 447C 1876734

BAD LANDS ATTRACTION 109Y
BAD LANDS QUEEN 365N

AOD	BW	205D	365D	EPDs	CE	BW	WW	YW	MILK
10	74	656	1060		+6.0	+0.4	+43	+71	+18

REFERENCE SIRE

66 ALLIANCE 91J

MALE CKM 91J 2231450 APRIL 21 2021

1 son sells

66 ALLIANCE 17Z 1677098

BAD LANDS ALLIANCE 14W
BAD LANDS GLENELLA 5041R

66 ROSEBUD 6049D 1930167

EXAR DECLARATION 1686B
SOUTH FORK ROSEBUD 233Y

EPDs	CE	BW	WW	YW	MILK	MCE
	+6.0	+2.0	+62	+104	+17	+12.0



DAM
6049D

PERFORMANCE DATA

AOD: Age of Dam

BW: Actual Birth Weight

205D: Weaning Weight in lbs. adjusted to 205 days

365D: Yearling Weight in lbs. adjusted to 365 days

REFERENCE SIRE

66 ALLIANCE 172F

MALE CKM 172F 2057474 APRIL 23 2018

1 son sells

66 ALLIANCE 17Z 1677098

BAD LANDS ALLIANCE 14W
BAD LANDS GLENELLA 5041R

BAD LANDS LASSIE 4008P 1201500

BAD LANDS WIDESPREAD 17J
BAD LANDS LASSIE 79K

EPDs	CE	BW	WW	YW	MILK	MCE
	+3.0	+1.8	+52	+84	+18	+12.0

A walking bull raised by us, a super long, round and curvy extremely strong footed sire. His dam 4008P was here until she was 15 years old. Pretty good feeling having the longevity bred into your cattle with the known longevity of the 17Z Alliance on the top side of the pedigree as well. Bull calves average birthweight is 80 lbs. Heifer calves is 74 lbs.



DAM
4008P

REFERENCE SIRE



7 sons sell

66 CHISM 48G

MALE CKM 48G 2116722 APRIL 16 2019

66 CHISM 1D 1929946

STUART CHISM 82A
66 DUCHESS 249A

66 ROSEBUD 43B 1819716

66 ALLIANCE 17Z
SOUTH FORK ROSEBUD 153X

EPDs	CE	BW	WW	YW	MILK	MCE
	+13.0	-1.0	+48	+68	+9	+18.0

A walking bull at the ranch raised by us, a "1D" son. 1D has quickly risen to the top at our place. Raising sons like 48G that are just the right type. Both 1D and 48G stamp their calves the same. Deep, soggy, soft made, moderate, easy to look at Angus cattle. Foot quality is very strong, udders on our milking daughters have been absolutely outstanding! 48G's dam is about as good as they come, expect females out of the 48G sons to remain in the herd for a long time. With very moderate birthweight on the dam's side and 1D having moderate birth, feel safe using 48G progeny on 1st calf heifers. Bull calves average birthweight is 76 lbs. Heifer calves is 73 lbs.

YEARLING SONS SELL AS LOTS 99-104



SIRE
1D



DAM
43B



Lot 38

2 YR OLD
38

66 CHISM 48G 2116722

66 BARBARA 518H 2171554

AOD	BW	205D	365D	EPDs	CE	BW	WW	YW	MILK
5	78	552	955		+10.0	-0.4	+33	+55	+15

66 CHISM 230L

MALE CKM 230L 2346605 APRIL 28 2023

66 CHISM 1D
66 ROSEBUD 43B

COLE CREEK CEDAR 1095
66 BARBARA 247F



NEVER A
DULL MOMENT
WITH TEENAGERS



REFERENCE SIRE



1 son sells

V D A R CEDAR WIND 8111

MALE IMP 8111Y 1751551 JANUARY 06 2011

COLE CREEK CEDAR RIDGE 1V 1659099

COLE CREEK BLACK CEDAR 46P
COLE CREEK CLOVANADA 49S

V D A R CHLOE 9727 16434284

V D A R REALLY WINDY 4097
V D A R CHLOE 6320

EPDs	CE	BW	WW	YW	MILK	MCE
	+12.0	-1.0	+48	+81	+30	+10.0

An A.I. heifer bull we used from Cole Creek bloodlines. Extreme docility with a very moderate birth weight and has excellent performance. We ourselves are very pleased with the growth of these cattle after they were weaned. Competing very well with all the other performance sires. Once again, going back to Cedar Ridge these cattle are displaying that natural ease of flesh. The real "cow mans" kind of cattle! Excellent females sired by Cedar Wind with superb udders. Bull calves average birthweight is 76 lbs. Heifer calves is 70 lbs.



Lot 39

2 YR OLD
39

66 CEDAR WIND 558L

MALE CKM 558L 2343303 MAY 15 2023

V D A R CEDAR WIND 8111 1751551

COLE CREEK CEDAR RIDGE 1V
V D A R CHLOE 9727

66 MIDDLEBROOK 195J 2238285

BANDURA MR RESOURCE 173G
66 MIDDLEBROOK 164F

AOD	BW	205D	365D	EPDs	CE	BW	WW	YW	MILK
4	76	581	983		+8.0	+0.9	+53	+90	+22

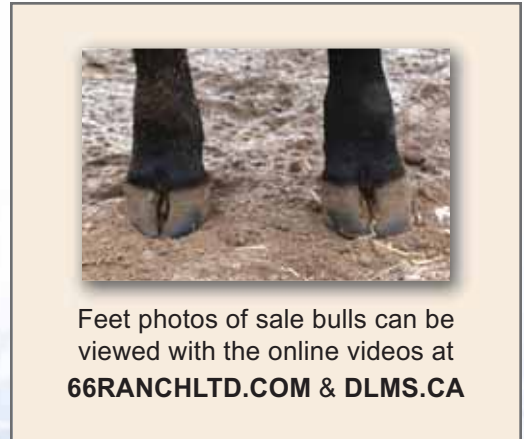


195J

DAM OF
LOT 39



ONE IS CLEAN, THE OTHER NOT SO MUCH!



Feet photos of sale bulls can be viewed with the online videos at 66RANCHLTD.COM & DLMS.CA





2 YR OLD
40

66 KINGPIN 627L

MALE CKM 627L 2347684 MAY 28 2023

MERIT KINGPIN 32H 2149400

MERIT KINGSMAN 8030F
MERIT BLACKLASS 6060D

66 ZARA JUMBO 155B 1805819

V D A R CEDAR WIND 8111
SOUTH FORK ZARA JUMBO 604Z

AOD	BW	205D	365D	EPDs	CE	BW	WW	YW	MILK
11	86	722	1128		+3.0	+2.6	+60	+95	+29



155B

DAM OF
LOT 40



431G

DAM OF
LOT 41



Lot 41

REFERENCE SIRE



30 sons sell

MERIT KINGPIN 32H

MALE MSL 32H 2149400 FEBRUARY 06 2020

MERIT KINGSMAN 8030F 2063014

BAR S RANGE BOSS 4002
MERIT SOCIALITE 48X

MERIT BLACKLASS 6060D 1926034

MERIT STONEY CREEK 4023
MERIT BLACKLASS 1184

EPDs	CE	BW	WW	YW	MILK	MCE
	+1.0	+3.8	+67	+105	+26	+7.0

A walking bull at the ranch purchased from the super people at Merit Cattle Co. Trent and Janelle Leibreich. We purchased him because he was in our eyes one of the longest, deepest, yet moderate herd bulls in their pen that season. But the determining factor for us deciding to own him was the maternal value he would bring. 6 of the 7 cows on the front of the pedigree were all raised at Merit. Proven, predictable maternal breeding bull here. 32H has and will continue to be bred to some of our top females at our place. Be sure to plan to retain all the heifer calves from 32H, they will be in the replacement pen and in the cow herd for a long time. 32H sires calves with exceptional foot quality. Not unexpected by the foot quality his dam has, as near a perfect foot with exceptional heel as you can find. His dam 6060 has produced many quality herdsires selling to multiple well respected seedstock producers besides Kingpin 32H himself! Bull calves average birthweight is 84 lbs. Heifer calves is 79 lbs.



KINGPIN'S FEET

YEARLING SONS SELL AS LOTS 1-10 & 124-135
TWO YEAR OLD SONS SELL AS LOTS 40-47



DAM
6060D

2 YR OLD
41

66 KINGPIN 570L

MALE CKM 570L 2347768 MAY 17 2023

MERIT KINGPIN 32H 2149400

MERIT KINGSMAN 8030F
MERIT BLACKLASS 6060D

66 COUNTESS 431G 2121538

66 ALLIANCE 17Z
SOUTH FORK BARBARA 128X

AOD	BW	205D	365D	EPDs	CE	BW	WW	YW	MILK
6	86	652	1063		+0.0	+3.8	+59	+92	+24



2 YR OLD
42

66 KINGPIN 648L
MALE CKM 648L 2347644 JUNE 04 2023

MERIT KINGPIN 32H 2149400

MERIT KINGSMAN 8030F
MERIT BLACKLASS 6060D

66 COUNTESS 323F 2058615

COLE CREEK SEVEN SON 1394
66 COUNTESS 471C

AOD	BW	205D	365D	EPDs	CE	BW	WW	YW	MILK
7	80	636	1076		+4.0	+2.2	+54	+93	+23

2 YR OLD
43

66 KINGPIN 579L
MALE CKM 579L 2347570 MAY 19 2023

MERIT KINGPIN 32H 2149400

MERIT KINGSMAN 8030F
MERIT BLACKLASS 6060D

66 BLACKLASS 419F 2058657

66 CHISM 1D
SOUTH FORK BLACKLASS 250Z

AOD	BW	205D	365D	EPDs	CE	BW	WW	YW	MILK
7	76	697	1143		+6.0	+1.9	+62	+96	+18



323F

DAM OF
LOT 42



419F

DAM OF
LOT 43





2 YR OLD
44

66 KINGPIN 578L

MALE CKM 578L 2347770 MAY 19 2023

MERIT KINGPIN 32H 2149400

MERIT KINGSMAN 8030F
MERIT BLACKCLASS 6060D

66 ZARA 60E 1997121

66 ALLIANCE 17Z
DEER RIVER ZARA 254W

AOD	BW	205D	365D	EPDs	CE	BW	WW	YW	MILK
8	88	669	1115		+1.0	+4.1	+62	+99	+25



2 YR OLD
46

66 KINGPIN 538L

MALE CKM 538L 2347783 MAY 13 2023

MERIT KINGPIN 32H 2149400

MERIT KINGSMAN 8030F
MERIT BLACKCLASS 6060D

66 BARBARA 494C 1867541

S A V REGISTRY 2831
BAD LANDS BARBARA 9079W

AOD	BW	205D	365D	EPDs	CE	BW	WW	YW	MILK
10	77	706	1147		+9.0	+0.5	+57	+92	+22



2 YR OLD
45

66 KINGPIN 505L

MALE CKM 505L 2343287 MAY 10 2023

MERIT KINGPIN 32H 2149400

MERIT KINGSMAN 8030F
MERIT BLACKCLASS 6060D

BAD LANDS ANNE 131X 1555785

BAD LANDS FORTE 16U
BAD LANDS ANNE 4015P

AOD	BW	205D	365D	EPDs	CE	BW	WW	YW	MILK
16	82	697	1171		+5.0	+2.3	+54	+92	+24



2 YR OLD
47

66 KINGPIN 582L

MALE CKM 582L 2347776 MAY 19 2023

MERIT KINGPIN 32H 2149400

MERIT KINGSMAN 8030F
MERIT BLACKCLASS 6060D

66 DUCHESS 76G 2116677

66 CHISM 1D
SOUTH FORK DUCHESS 233X

AOD	BW	205D	365D	EPDs	CE	BW	WW	YW	MILK
6	85	637	1058		+4.0	+2.5	+60	+92	+17



60E - DAM OF LOT 44



131X - DAM OF LOT 45



494C - DAM OF LOT 46



Lot 48



416H
DAM OF
LOT 48



Lot 49

2 YR OLD
48

66 RANCH WATER 535L
MALE CKM 535L 2347785 MAY 13 2023

MERIT RANCH WATER 1067J 2211703

BLAIR'S THUNDERSTORM 807F
MERIT SOCIALITE 8196F

66 DUCHESS 416H 2171507

66 CHISM 1D
SOUTH FORK DUCHESS 233X

AOD	BW	205D	365D	EPDs	CE	BW	WW	YW	MILK
5	94	657	1082		+0.0	+2.6	+57	+88	+17

REFERENCE SIRE



20 sons sell

MERIT RANCH WATER 1067J

EPDs	CE	BW	WW	YW	MILK	MCE
	+11.0	-1.9	+46	+75	+25	+13.0

YEARLING SONS SELL AS LOTS 11-18 & 136-144
TWO YEAR OLD SONS SELL AS LOTS 48-51

2 YR OLD
49

66 RANCH WATER 618L
MALE CKM 618L 2343310 MAY 27 2023

MERIT RANCH WATER 1067J 2211703

BLAIR'S THUNDERSTORM 807F
MERIT SOCIALITE 8196F

66 PLUS 86H 2171367

66 CHISM 1D
66 PLUS 386D

AOD	BW	205D	365D	EPDs	CE	BW	WW	YW	MILK
5	74	624	1015		+12.0	-2.1	+46	+71	+19



Lot 50



39G
DAM OF
LOT 50

2 YR OLD
50

66 RANCH WATER 530L
MALE CKM 530L 2343295 MAY 11 2023

MERIT RANCH WATER 1067J 2211703

BLAIR'S THUNDERSTORM 807F
MERIT SOCIALITE 8196F

66 LILAC 39G 2112961

66 ALLIANCE 17Z
DEER RIVER LILAC 364T

AOD	BW	205D	365D	EPDs	CE	BW	WW	YW	MILK
6	78	670	1081		+4.0	+1.0	+55	+87	+23



2 YR OLD
51

66 RANCH WATER 541L

MALE CKM 541L 2343298 MAY 13 2023

MERIT RANCH WATER 1067J 2211703

BLAIR'S THUNDERSTORM 807F
MERIT SOCIALITE 8196F

66 PRINCESS 240J 2231321

66 CHISM 1D
66 PRINCESS 7046E

AOD	BW	205D	365D	EPDs	CE	BW	WW	YW	MILK
4	73	586	944		+10.0	-0.9	+47	+72	+17



2 YR OLD
52

66 CHISM 83L

MALE CKM 83L UNREGISTERED APRIL 21 2023

66 CHISM 32J 2231431

66 CHISM 1D
66 IDELETTE 37C

66 MIDDLEBROOK 644H 2178188

COLE CREEK LIL SEAL 1166
66 MIDDLEBROOK 33C

AOD	BW	205D	365D	EPDs	CE	BW	WW	YW	MILK
5	89	651	1175		-	-	-	-	-



2 YR OLD
53

66 CHISM 39L

MALE CKM 39L UNREGISTERED APRIL 28 2023

66 CHISM 32J 2231431

66 CHISM 1D
66 IDELETTE 37C

66 COUNTESS 465H 2171527

HOOVER DAM
66 COUNTESS 173F

AOD	BW	205D	365D	EPDs	CE	BW	WW	YW	MILK
5	73	633	1058		-	-	-	-	-

REFERENCE SIRE

66 CHISM 32J

MALE CKM 32J 2231431 APRIL 17 2021

2 sons sell

66 CHISM 1D 1929946

STUART CHISM 82A
66 DUCHESS 249A

66 IDELETTE 37C 1867096

V D A R CEDAR WIND 8111
66 IDELETTE 264A

EPDs	CE	BW	WW	YW	MILK	MCE
	+4.0	+2.1	+72	+111	+11	+10.0



Lot 54



Lot 55

2 YR OLD
54

66 COWBOY UP 533L
MALE CKM 533L 2343296 MAY 13 2023

HF RISKY BUSINESS 135G 2093092

HA COWBOY UP 5405C

HF TIBBIE 282A

66 BARBARA 365F 2063311

66 ALLIANCE 17Z
SOUTH FORK BARBARA 128X

AOD	BW	205D	365D	EPDs	CE	BW	WW	YW	MILK
7	92	664	1124		+1.0	+4.1	+62	+111	+19

2 YR OLD
55

66 COWBOY UP 279L
MALE CKM 279L 2343205 APRIL 29 2023

HF RISKY BUSINESS 135G 2093092

HA COWBOY UP 5405C

HF TIBBIE 282A

66 BLACKBIRD 4148B 1813929

BAD LANDS ALLIANCE 326X
DEER RIVER BLACKBIRD 71S

AOD	BW	205D	365D	EPDs	CE	BW	WW	YW	MILK
11	58	516	920		+14.0	-1.7	+33	+62	+20

REFERENCE SIRE



5 sons sell

HF RISKY BUSINESS 135G

EPDs	CE	BW	WW	YW	MILK	MCE
	+9.0	+1.2	+67	+122	+21	+6.0

YEARLING SONS SELL AS LOTS 19-21



365F
DAM OF
LOT 54



4148B
DAM OF
LOTS 55
& 122



REFERENCE SIRE



1 son sells

MERIT KINGSMAN 8030F

MALE TJL 8030F 2063014 ET JANUARY 30 2018

BAR S RANGE BOSS 4002 1881898

BAR S RANGE BOSS 1118
BAR S PRIDE 0073

MERIT SOCIALITE 48X 1565266

GDAR INSIGHT 7201
MERIT SOCIALITE 4195

EPDs	CE	BW	WW	YW	MILK	MCE
	+6.0	+3.0	+55	+83	+23	+10.0

REFERENCE SIRE



1 son sells

MERIT MCLAREN 8020F

MALE MSL 8020F 2031045 JANUARY 27 2018

BAR S RANGE BOSS 4002 1881898

BAR S RANGE BOSS 1118
BAR S PRIDE 0073

MERIT BLACKLASS 6060D 1926034

MERIT STONEY CREEK 4023
MERIT BLACKLASS 1184

EPDs	CE	BW	WW	YW	MILK	MCE
	+2.0	+0.9	+38	+64	+22	+3.0



Lot 56



Lot 57

2 YR OLD
56

66 KINGSMAN 296L

MALE CKM 296L 2350000 ET APRIL 30 2023

MERIT KINGSMAN 8030F 2063014

BAR S RANGE BOSS 4002
MERIT SOCIALITE 48X

MERIT FLORA 4120 1796474

BAR-E-L IRON WILL 32Y
MERIT FLORA 4105

AOD	BW	205D	365D	EPDs	CE	BW	WW	YW	MILK
11	98	745	1193		+0.5	+4.7	+62	+96	+23

2 YR OLD
57

66 MCLAREN 205L

MALE CKM 205L 2349999 ET APRIL 27 2023

MERIT MCLAREN 8020F 2031045

BAR S RANGE BOSS 4002
MERIT BLACKLASS 6060D

MERIT FLORA 4120 1796474

BAR-E-L IRON WILL 32Y
MERIT FLORA 4105

AOD	BW	205D	365D	EPDs	CE	BW	WW	YW	MILK
11	93	638	1035		-1.5	+3.2	+44	+70	+22



48X - DAM OF MERIT KINGSMAN 8030F



4120 - ET DAM OF LOTS 14, 56 & 57



6060D - DAM OF MERIT MCLAREN 8020F



Lot 58

2 YR OLD
58

66 INCREDIBLE 551L

MALE CKM 551L 2343301 MAY 15 2023

MERIT INCREDIBLE 1020J 2233532

SOUTH FORK IDELETTE 5X 1585286

KR INCREDIBLE 8149
MERIT FLORA 6078D

K C F BENNETT TOTAL
DEER RIVER IDELETTE 456S

AOD	BW	205D	365D	EPDs	CE	BW	WW	YW	MILK
15	84	629	1124		+7.0	+0.5	+53	+102	+24



5X
DAM OF
LOT 58



212H
DAM OF
LOT 59



Lot 59

REFERENCE SIRE



14 sons sell

MERIT INCREDIBLE 1020J

MALE TJL 1020J 2233532 ET FEBRUARY 02 2021

KR INCREDIBLE 8149 2144016

MERIT FLORA 6078D 1934698

PANTHER CR INCREDIBLE 6704
KR PRIDE 4031

BAR S RANGE BOSS 4002
MERIT FLORA 4120

EPDs	CE	BW	WW	YW	MILK	MCE
	+8.0	+0.0	+73	+131	+33	+13.0

A walking bull purchased at Merit Cattle Co. We fell in love with 1020J for his length of body, muscle pattern and huge middle as well as an incredible hip. All this with a very moderate birthweight. Once again we chose 1020J for all his great qualities but were absolutely convinced to own him with the dam on the bottom of his pedigree, Flora 6078D. We just cannot get enough of the Flora bred females at Merit. Exceptional udder quality from this line. You will want to keep these daughters. Big middled, hairy females with impeccable udders. The kind we are striving to build here at 66 Ranch. Bull calves average birthweight is 80 lbs. Heifers calves is 75 lbs. Owned with Murray Ranches.

YEARLING SONS SELL AS LOTS 105-116



DAM
6078D



FULL
SISTER
1004J

2 YR OLD
59

66 INCREDIBLE 546L

MALE CKM 546L 2343299 MAY 15 2023

MERIT INCREDIBLE 1020J 2233532

66 BARBARA 212H 2178184

KR INCREDIBLE 8149
MERIT FLORA 6078D

66 THRIVE 8023F
66 BARBARA 345E

AOD	BW	205D	365D	EPDs	CE	BW	WW	YW	MILK
5	69	551	991		+11.0	-1.8	+53	+99	+20

REFERENCE SIRE



1 son sells

STERLING PACIFIC 904

MALE IMP 9904G 2305436 ET FEBRUARY 13 2019

HOOVER NO DOUBT 1836419

MOGCK BULLSEYE
MISS BLACKCAP ELLSTON J2

BALDRIDGE ISABEL B082 18063292

G A R PROPHET DMF
BALDRIDGE ISABEL Y69

EPDs	CE	BW	WW	YW	MILK	MCE
	+4.0	+2.1	+77	+140	+8	+13.0

An A.I. sire chosen for added growth and performance backed by a couple high producing cows from the Baldridge program. Great feet will be an added feature from Hoover No Doubt being the sire. Bull calves average birthweight is 80 lbs. Heifer calves is 77 lbs.



Lot 60

2 YR OLD
60

66 PACIFIC 542L

MALE CKM 542L 2351442 MAY 14 2023

STERLING PACIFIC 904 2305436

HOOVER NO DOUBT
BALDRIDGE ISABEL B082

66 MIDDLEBROOK 9058G 2129296

S A V SUPERCHARGER 6813
DEER RIVER MIDDLEBROOK 491U

AOD	BW	205D	365D	EPDs	CE	BW	WW	YW	MILK
6	86	689	1151		+2.0	+2.4	+65	+117	+17



9058G

DAM OF
LOT 60

IT'S THE SERVICE
AFTER THE SALE THAT COUNTS!

REFERENCE SIRE



14 sons sell

MERIT INVESTMENT 1054J

MALE TJL 1054J 2233546 ET CAC FEBRUARY 09 2021

U-2 COALITION 206C 1837798

HF SYNDICATE 213Z
U2 ERELITE 109Z

MERIT FLORA 6078D 1934698

BAR S RANGE BOSS 4002
MERIT FLORA 4120

EPDs	CE	BW	WW	YW	MILK	MCE
	+7.0	+2.3	+66	+98	+22	+6.0

A walking bull at the Ranch. We were able to purchase half interest in Investment over the winter of 2024/25. Extremely excited that the great folks at Duralta Farms offered us the opportunity to purchase 1054J so he could walk the pastures at 66 Ranch. A female maker through and through. 1054J is backed by the absolutely beautiful female and herd bull maker, Flora 6078D. I think if you read through our herdsire footnotes you may see a common theme here of this prolific cow Flora 6078D. On the topside of 1054J's pedigree is U2 Coalition 206C, a proven bull backed by another outstanding female U2 Erelite 109Z. You will want to keep all the females that are sired by these 1054J sons, the bred heifers and heifer calves at our place are at the front end of their pens. Bull calves average birthweight is 83 lbs. Heifer calves is 78 lbs. Owned with Murray Ranches.

YEARLING SONS SELL AS LOTS 79-91



DAM
6078D



1054J
DAUGHTER



Lot 61

2 YR OLD
61

MERIT INVESTMENT 1054J 2233546

66 ANNE 11G 2112950

66 INVESTMENT 528L
MALE CKM 528L 2343293 MAY 11 2023

U-2 COALITION 206C
MERIT FLORA 6078D

66 CHISM 1D
66 ANNE 593D

AOD	BW	205D	365D	EPDs	CE	BW	WW	YW	MILK
6	91	656	1031		+4.0	+2.7	+62	+91	+18



11G
DAM OF
LOT 61



HARD WORKING
CREW AT
66 RANCH



FREEZE
BRANDS
READY

REFERENCE SIRE



1 son sells

W SUNRISE EXECUTIVE LAW 507H
MALE TMP 507H 2164496 FEBRUARY 01 2020

PM EXECUTIVE DECISION 5'17 1969967

BAR-E-L NATURAL LAW 52Y DDF
PM BLOSSOM 124'13

HF TIBBIE 27D 1907060

HF SYNDICATE 213Z
HF TIBBIE 162B

EPDs	CE	BW	WW	YW	MILK	MCE
	+5.0	+1.8	+70	+126	+23	+9.0



Lot 62

2 YR OLD
62

66 EXECUTIVE LAW 190L
MALE CKM 190L 2350002 ET APRIL 26 2023

W SUNRISE EXECUTIVE LAW 507H 2164496

PM EXECUTIVE DECISION 5'17
HF TIBBIE 27D

MERIT BLACKCLASS 6060D 1926034

MERIT STONEY CREEK 4023
MERIT BLACKCLASS 1184

AOD	BW	205D	365D	EPDs	CE	BW	WW	YW	MILK
9	90	655	1074		+2.0	+3.0	+60	+104	+25

6060D

ET
DAM OF
LOT 62





2 YR OLD
63

66 COWBOY LOGIC 599L

MALE CKM 599L 2347773 MAY 24 2023

HOOVER COWBOY LOGIC X22 2203665

FREYS COWBOY LOGIC
ERICA OF ELLSTON R251

66 COUNTESS 52J 2231251

BROOKING REAL ESTATE 6072
66 COUNTESS 364G

AOD	BW	205D	365D	EPDs	CE	BW	WW	YW	MILK
4	88	732	1148		+4.0	+2.4	+65	+113	+28



52J

DAM OF
LOT 63



2 YR OLD
64

66 COWBOY LOGIC 556L

MALE CKM 556L 2347645 MAY 15 2023

HOOVER COWBOY LOGIC X22 2203665

FREYS COWBOY LOGIC
ERICA OF ELLSTON R251

66 QUEEN 361J 2231370

66 CHISM 1D
66 QUEEN 452C

AOD	BW	205D	365D	EPDs	CE	BW	WW	YW	MILK
4	75	517	962		+8.0	+1.3	+51	+90	+15

REFERENCE SIRE



3 sons sell

HOOVER COWBOY LOGIC X22

MALE IMP 222H 2203665 JANUARY 09 2020

FREYS COWBOY LOGIC 2177826

HA COWBOY UP 5405C
F A R PRINCESS 148Z

ERICA OF ELLSTON R251 18535298

JINDRA DOUBLE VISION
ERICA OF ELLSTON N1

EPDs	CE	BW	WW	YW	MILK	MCE
	+15.0	-1.0	+56	+101	+28	+17.0

A walking bull at the ranch purchased from the Hoover Angus operation in Iowa, well known for producing super females with their genetics. We selected 222H for his ability to calve to 1st calf heifers as well bring superior growth after they are born. 222H is one of the favorites at the ranch for the extra rib he definitely carries. A super footed, long, moderate big hipped bull. Use his sons confidently on your heifers. Bull calves average birthweight is 75 lbs. Heifer calves is 66 lbs.

BULLS SELL IN CATALOG ORDER

Updated weights & scrotal measurements available Sale Day



2 YR OLD
65

66 COWBOY LOGIC 593L

MALE CKM 593L 2347778 MAY 23 2023

HOOVER COWBOY LOGIC X22 2203665

FREYS COWBOY LOGIC
ERICA OF ELLSTON R251

66 ROSEBUD 375J 2231379

CONNELLY THUNDER
66 ROSEBUD 80A

AOD	BW	205D	365D	EPDs	CE	BW	WW	YW	MILK
4	75	565	969		+12.0	-0.9	+43	+78	+23

REFERENCE SIRE



HOOVER NO DOUBT X6

MALE IMP 06H 2203616 ET JANUARY 02 2020

HOOVER NO DOUBT 1836419

MOGCK BULLSEYE
MISS BLACKCAP ELLSTON J2

BLKCP EMPRESS ELLSTON C344 14855747

ROTH FAMOUS 1006
BLKCP EMPRESS ELLSTON V127

EPDs	CE	BW	WW	YW	MILK	MCE
	-1.0	+4.4	+74	+134	+10	+15.0

A walking bull at our place purchased from Hoover Angus. We selected this bull for his added growth and his absolutely perfect feet. His dam walked the pastures at Hoover's until the age of 16 years old. They pictured her feet at the age of 14 and they are some of the straightest toes I've laid eyes on. Hoover No Doubt the sire, is also known for having a super strong foot. So if you are wanting to grow big steer calves that weigh up, and are wanting females to be in the herd for a long time. Make sure you take a look at the 6H sons on offer. Bull calves birthweight is 85 lbs. Heifer calves is 80 lbs.



NO DOUBT X6 FEET

YEARLINGS SONS SELL AS LOTS 92-98

THANK YOU

TO JON LATRACE TRUCKING

The Latrace Family



2 YR OLD
66

HOOVER NO DOUBT X6 2203616

66 QUEEN 487H 2171535

66 NO DOUBT 612L

MALE CKM 612L 2347742 MAY 26 2023

HOOVER NO DOUBT
BLKCP EMPRESS ELLSTON C344

S A V THRIVE 5054
BAD LANDS QUEEN 6062S

AOD	BW	205D	365D	EPDs	CE	BW	WW	YW	MILK
5	84	745	1151		+4.0	+1.6	+63	+106	+16



2 YR OLD
67

HOOVER NO DOUBT X6 2203616

66 ERICA 428H 2171512

66 NO DOUBT 522L

MALE CKM 522L 2347810 MAY 11 2023

HOOVER NO DOUBT
BLKCP EMPRESS ELLSTON C344

V D A R CEDAR WIND 8111
66 ERICA 52F

AOD	BW	205D	365D	EPDs	CE	BW	WW	YW	MILK
5	103	676	1149		-4.0	+5.3	+63	+116	+14

REFERENCE SIRE



3 sons sell

MC CUMBER 5005 TITANIUM 1004

MALE IMP 1104J 2347800 ET JANUARY 25 2021

MC CUMBER TITANIUM 5005 2142012

MC CUMBER TITANIUM 3127
MISS WIX 7126 OF MC CUMBER

MISS WIX 2012 OF MC CUMBER 17338588

O C C TREMENDOUS 619T
MISS WIX 2022 HC MC CUMBER

EPDs	CE	BW	WW	YW	MILK	MCE
	+6.0	+1.4	+54	+94	+24	+3.0

A walking bull we purchased from the great people at McCumber Angus Ranch. We chose to purchase 1004J for his natural ease of flesh, his moderate birthweight and very respectable weaning weight. The biggest reason we chose 1004J was for the dam that raised him. She has a huge middle, incredible udder, feminine, gorgeous female. The dam 2012, pictured below, has raised herd bulls used at McCumber Angus Ranch and is part of their donor program. Bull calves average birthweight is 83 lbs. Heifer calves is 74 lbs.

YEARLING SON SELLS AS LOT 161



DAM
2012



FULL
SISTER
8008

66 RANCH LTD.

Reserves the right to draw 250 straws of semen at our expense and at your convenience on any bull selling in the sale. For in-herd use only.



Lot 68

2 YR OLD
68

66 TITANIUM 523L

MALE CKM 523L 2351406 MAY 11 2023

MC CUMBER 5005 TITANIUM 1004 2347800

MC CUMBER TITANIUM 5005
MISS WIX 2012 OF MC CUMBER

66 ROSEBUD 8055F 2058641

BRUNS THUNDERBOLT 963
SOUTH FORK ROSEBUD 446Z

AOD	BW	205D	365D	EPDs	CE	BW	WW	YW	MILK
7	73	656	1122		+9.0	+0.8	+50	+91	+28



Lot 69

2 YR OLD
69

66 TITANIUM 532L

MALE CKM 532L 2351407 MAY 12 2023

MC CUMBER 5005 TITANIUM 1004 2347800

MC CUMBER TITANIUM 5005
MISS WIX 2012 OF MC CUMBER

66 HYALITE HEDY 113G 2116692

WK BOBCAT
66 HYALITE HEDY 415C

AOD	BW	205D	365D	EPDs	CE	BW	WW	YW	MILK
6	78	641	1049		+11.0	+0.0	+49	+86	+25

113G

DAM OF
LOT 69





Lot 70



Lot 71

2 YR OLD
70

66 ALLIANCE 581L

MALE CKM 581L 2347628 MAY 19 2023

66 ALLIANCE 247H 2178207

BAD LANDS ALLIANCE 14W
BLACK GEM LOVEMERE R 221N

66 BLACKBIRD 8034F 2058587

V D A R CEDAR WIND 8111
66 BLACKBIRD 6078D

AOD	BW	205D	365D	EPDs	CE	BW	WW	YW	MILK
7	84	746	1132		+7.0	+1.1	+52	+82	+21

2 YR OLD
71

66 ALLIANCE 564L

MALE CKM 564L 2347765 MAY 16 2023

66 ALLIANCE 247H 2178207

BAD LANDS ALLIANCE 14W
BLACK GEM LOVEMERE R 221N

66 PEARL 420C 1867473

BOYD RESUME 9008
BAD LANDS PEARL 92X

AOD	BW	205D	365D	EPDs	CE	BW	WW	YW	MILK
10	78	654	1049		+9.0	+0.1	+41	+64	+22

REFERENCE SIRE

66 ALLIANCE 247H

MALE CKM 247H 2178207 ET APRIL 25 2020

3 sons sell

BAD LANDS ALLIANCE 14W 1502297

KMK ALLIANCE 6595 I87
BAD LANDS COUNTESS 214M

BLACK GEM LOVEMERE R 221N 1187111

THREE TREES EVERREADY C55D
CROWFOOT LOVEMERE R 922I

EPDs	CE	BW	WW	YW	MILK	MCE
	+9.0	+0.3	+46	+72	+16	+14.0

A walking bull at the Ranch raised by us. We selected 247H for the maternal greatness he will breed on to his progeny. His sire was none other than CDS 14W, the sire of our CKM 17Z bull. Expect them to be hairy, with added growth, docile and good footed. The dam of 247H was a moderate, easy keeping cow with an amazing foot under her. We unfortunately lost her at 14 years of age, so you can expect fertility and longevity to be bred into your progeny. Bull calves average birthweight is 83 lbs. Heifer calves is 71 lbs.



221N - DAM OF ALLIANCE 247H



Lot 72

2 YR OLD
72

66 ALLIANCE 602L

MALE CKM 602L 2347780 MAY 24 2023

66 ALLIANCE 247H 2178207

BAD LANDS ALLIANCE 14W
BLACK GEM LOVEMERE R 221N

66 BARBARA 181F 2058532

COLE CREEK CEDAR RIDGE 181
SOUTH FORK BARBARA 486Z

AOD	BW	205D	365D	EPDs	CE	BW	WW	YW	MILK
7	86	593	1000		+8.0	+0.4	+34	+59	+19



8034F - DAM OF LOT 70



420C - DAM OF LOT 71



181F - DAM OF LOT 72



Lot 73



Lot 74

2 YR OLD
73

66 ALLIANCE 520L
MALE CKM 520L 2343290 MAY 11 2023

66 ALLIANCE 17Z 1677098

BAD LANDS ALLIANCE 14W
BAD LANDS GLENELLA 5041R

66 SG JUMBOLEEN 321F 2058614

HOOVER DAM
COLE CREEK SG JUMBOLEEN 1066

AOD	BW	205D	365D	EPDs	CE	BW	WW	YW	MILK
7	95	735	1178		+0.0	+4.5	+67	+111	+22

742 YR OLD
74

66 ALLIANCE 340L
MALE CKM 340L 2343224 MAY 02 2023

66 ALLIANCE 17Z 1677098

BAD LANDS ALLIANCE 14W
BAD LANDS GLENELLA 5041R

66 DUCHESS 143A 1738818

BASIN EXCITEMENT
DEER RIVER DUCHESS 571U

AOD	BW	205D	365D	EPDs	CE	BW	WW	YW	MILK
12	89	661	1128		+3.0	+3.3	+63	+104	+20

REFERENCE SIRE

66 ALLIANCE 17Z

MALE CKM 17Z 1677098 MARCH 26 2012

3 sons sell

EPDs	CE	BW	WW	YW	MILK	MCE
	+0.0	+4.6	+82	+129	+17	+14.0

Plain and simple, 17Z has it all. Performance, ease of flesh, leg structure, super foot, free moving, maternal. We feel we have lucked out and finally raised one that can compete with any A.I. sire. His heifer calves are extremely feminine and by far the top end of the pen. Very moderate birth weights out of 486 calves, 86 lbs. avg. on the bull calves and 78 lbs. avg. on the heifer calves. We find it much easier to have confidence in A.I.'ing to a bull that you know exactly what his sire is and as well his dam. Because they both came from our program.



66 ALLIANCE 17Z



Lot 75

2 YR OLD
75

66 ALLIANCE 272L
MALE CKM 272L 2343201 APRIL 29 2023

66 ALLIANCE 17Z 1677098

BAD LANDS ALLIANCE 14W
BAD LANDS GLENELLA 5041R

DEER RIVER ROSEBUD 29W 1500535

DEER RIVER RAIN AGAIN 441S
DEER RIVER ROSEBUD 51T

AOD	BW	205D	365D	EPDs	CE	BW	WW	YW	MILK
16	70	588	977		+9.0	-0.2	+37	+58	+17



321F - DAM OF LOT 73



143A - DAM OF LOT 74



29W - DAM OF LOT 75

REFERENCE SIRE



3 sons sell

MERIT STONEY CREEK 7035E

MALE MSL 7035E 1986184 FEBRUARY 01 2017

MERIT STONEY CREEK 4023 1823867

HF PROWLER 43U
MERIT PRIDE 2010

MERIT BLACKCLASS 1184 1626227

BEVERLY HILLS VISA 734
MERIT BLACKCLASS 5195

EPDs	CE	BW	WW	YW	MILK	MCE
	+4.0	+3.2	+54	+80	+24	+13.0

A Merit Cattle Co. bred bull we were able to purchase at Mar Mac Farms Dispersal Sale. We fell in love with the progeny we saw by 7035E. The daughters make you drool with big middles, wide tops, hairy and super docile. The bulls look like bulls should, crested necks, big hiped, big middles, big nuts and great feet. We are very pleased with the 7035E sire group. Bull calves average birthweight 85 lbs. Heifer calves 80 lbs.

YEARLING SON SELLS AS LOT 160



DAM
1184Y

FULL
SISTER
6060D



161C

DAM OF
LOT 77



Lot 76

2 YR OLD
76

66 STONEY CREEK 608L

MALE CKM 608L 2347744 MAY 25 2023

MERIT STONEY CREEK 7035E 1986184

MERIT STONEY CREEK 4023
MERIT BLACKCLASS 1184

66 BLACKBIRD 364C 1867422

66 ALLIANCE 17Z
DEER RIVER BLACKBIRD 44S

AOD	BW	205D	365D	EPDs	CE	BW	WW	YW	MILK
10	82	686	1095		+5.0	+2.7	+55	+82	+22



364C

DAM OF
LOT 76



Lot 77

2 YR OLD
77

66 STONEY CREEK 638L

MALE CKM 638L 2347531 TWIN MAY 30 2023

MERIT STONEY CREEK 7035E 1986184

MERIT STONEY CREEK 4023
MERIT BLACKCLASS 1184

66 LASSIE 161C 1867221

STUART CHISM 82A
BAD LANDS LASSIE 127X

AOD	BW	205D	365D	EPDs	CE	BW	WW	YW	MILK
10	85	666	1054		+4.5	+2.6	+51	+75	+19

REFERENCE SIRE

BURNETT REMEDY 45H

MALE BBW 45H 2141911 FEBRUARY 28 2020

1 son sells

CTS REMEDY 1T01 1947511

CONNELY THUNDER
CTS 7V03 BELLEMERE MAID 9T02

BURNETT SHOKA 3C 1888642

WILL ROLE MODEL
BURNETT SHOKA 1Z

EPDs	CE	BW	WW	YW	MILK	MCE
	+9.0	-2.6	+28	+62	+27	+12.0

A walking bull at the ranch purchased from Burnett Angus. We selected 45H to breed to our first calf heifers. He calved excellent, with some real growth to the calves. His dam brings the power for the growth, she is super uddered female, excellent angus cow. 45H was a selection for us for his superb foot, straight toes and an abundance of heel. Bull calves average birthweight is 70 lbs. Heifer calves is 70 lbs.



Lot 78

WE ASK . . .

That ALL BULLS be taken home right after the sale, or picked up within 5 days PLEASE!

2 YR OLD
78

BURNETT REMEDY 45H 2141911

66 LASSIE 538J 2238356

66 REMEDY 584L

MALE CKM 584L 2347777 MAY 20 2023

CTS REMEDY 1T01
BURNETT SHOKA 3C

F-R 5099 8096F
66 LASSIE 270G

AOD	BW	205D	365D	EPDs	CE	BW	WW	YW	MILK
4	65	571	957		+11.0	-2.5	+34	+58	+23



WHAT CUSTOMERS HAVE TO SAY ABOUT OUR BULLS

Carolside Ranching would like to express our sincere gratitude and appreciation for the incredible level of service we have received from Kelsey and Malissa (66 Ranch). The bulls we have purchased from 66 have had a huge positive impact on our herd.

Sincerely,
Brad Slorstead
(104 bulls)

Back in 2011 we approached Chuck, Kelsey and Malissa about building up our herd with 66 Ranch Angus genetics. With ranch perspective, they understood and respected our long-term plan. We calve out in 12-14 section fields with rough terrain, so we needed bulls that could produce easy calving cows, and have strong maternal instincts. Our bull battery of 55-60 exclusive 66 Ranch genetics gets fresh bulls added every year, and it's not uncommon to have 5 or more 6 year old bulls still viable and working.

When planning the new bull purchases, we try to stick to about 4 to 5 family groups using half-brothers to help bring uniformity. The evidence shows each fall during weaning when large groups of balanced uniform steers and heifers are put in pens ready for sale or feed. 66 Ranch does an amazing job of staying ahead of genetic selection by planning years in advance. The bulls are easy to work with, they have great feet, travel well, are easy keepers, who cover the cows in tough conditions, and their longevity is valuable. The cow herd has also benefited from the genetics with many cows well over 10 years of age still producing, that still have great feet and udders.

We are so thankful and respectful of the guidance and working relationship with Kelsey and Malissa, who's top-notch bull program continues to improve our cow herd every year.

Sincerely,
Rafter 7 Ranches Ltd.
Tim, Christina, Jesse, Joc & Brielle Christianson
(157 bulls)

SIRES AT 66 RANCH OUT OF FLORA 6078D

We think so much of this cow we wanted to implement the Flora Family into our program and have purchased and used these sons

★ DAM

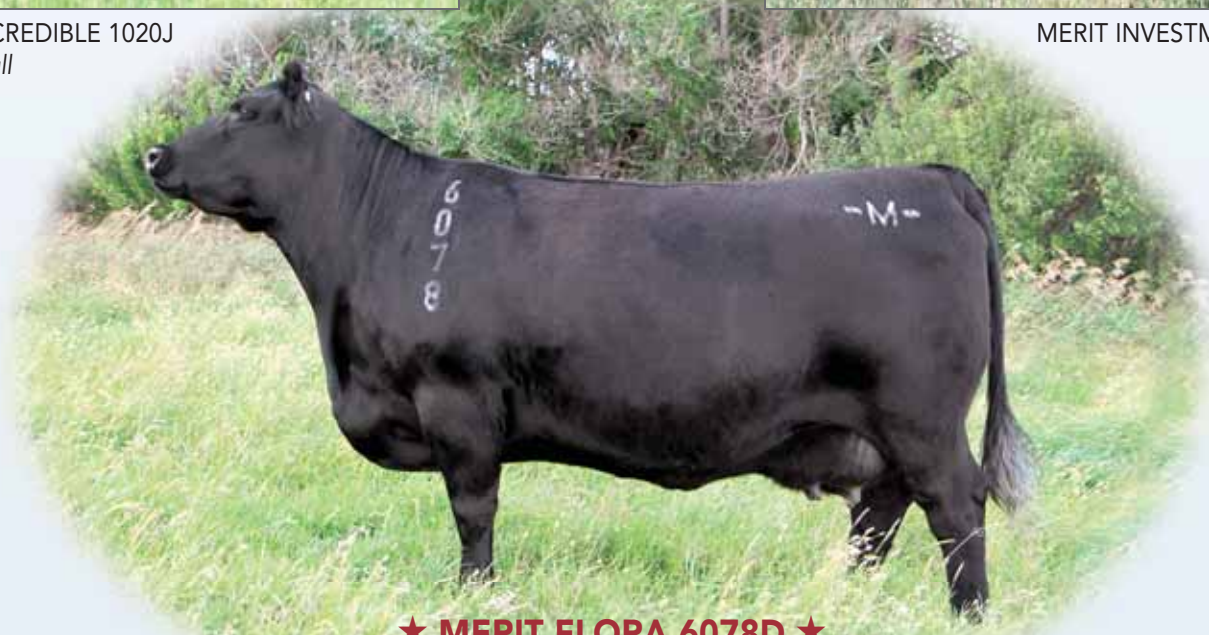


MERIT INCREDIBLE 1020J
Walking Bull

DAM ★



MERIT INVESTMENT 1054J
Walking Bull



★ MERIT FLORA 6078D ★

DAM OF THESE
FABULOUS BULLS

★ DAM



MERIT THUNDERSTORM 1138J
Walking Bull

DAM ★



MERIT DEPTH CHARGE 1001J
Walking Bull

★
PATERNAL
GRANDAM



MERIT INTENTIONAL 2047K - Walking Bull



YEARLING BULLS

LOTS
79-168

REFERENCE SIRE



14 sons sell

MERIT INVESTMENT 1054J

EPDs	CE	BW	WW	YW	MILK	MCE
	+7.0	+2.3	+66	+98	+22	+6.0

A walking bull at the Ranch. We were able to purchase half interest in Investment over the winter of 2024/25. A female maker through and through. 1054J is backed by the absolutely beautiful female and herd bull maker, Flora 6078D. On the topside of 1054J's pedigree is U2 Coalition 206C, a proven bull backed by another outstanding female U2 Erelite 109Z. You will want to keep all the females that are sired by these 1054J sons, the bred heifers and heifer calves at our place are at the front end of their pens. Bull calves average BW is 83 lbs. Heifer calves is 78 lbs. Owned with Murray Ranches.

TWO YEAR OLD SON SELLS AS LOT 61



644H

DAM OF
LOT 79



426H

DAM OF
LOT 80



Lot 79

YEARLING
79

MERIT INVESTMENT 1054J 2233546

66 MIDDLEBROOK 644H 2178188

66 INVESTMENT 294M

MALE CKM 294M 2394869 APRIL 29 2024

U-2 COALITION 206C
MERIT FLORA 6078D

COLE CREEK LIL SEAL 1166
66 MIDDLEBROOK 33C

AOD	BW	205D	EPDs	CE	BW	WW	YW	MILK
5	91	738		+3.0	+3.7	+67	+104	+20



Lot 80

YEARLING
80

MERIT INVESTMENT 1054J 2233546

66 LULU 426H 2171511

66 INVESTMENT 310M

MALE CKM 310M 2394876 APRIL 30 2024

U-2 COALITION 206C
MERIT FLORA 6078D

CONNELLY THUNDER
66 LULU 209F

AOD	BW	205D	EPDs	CE	BW	WW	YW	MILK
5	79	717		+7.0	+1.5	+60	+98	+24

NO BULLS HAVE BEEN SOLD PRIOR TO THE SALE



Lot 81

**YEARLING
81**

66 INVESTMENT 169M

MALE CKM 169M 2394823 APRIL 24 2024

MERIT INVESTMENT 1054J 2233546

66 ERICA 18F 2058433

U-2 COALITION 206C
MERIT FLORA 6078D

S A V RESOURCE 1441
66 ERICA 50A

AOD	BW	205D	EPDs	CE	BW	WW	YW	MILK
7	84	744		+7.0	+1.6	+61	+97	+21



Lot 83

**YEARLING
83**

66 INVESTMENT 177M

MALE CKM 177M 2394828 APRIL 24 2024

MERIT INVESTMENT 1054J 2233546

66 BARBARA 122F 2058497

U-2 COALITION 206C
MERIT FLORA 6078D

F-R ATHABASCA 5051
66 BARBARA 218D

AOD	BW	205D	EPDs	CE	BW	WW	YW	MILK
7	87	643		+6.0	+2.1	+47	+73	+23



Lot 82

**YEARLING
82**

66 INVESTMENT 70M

MALE CKM 70M 2394790 APRIL 19 2024

MERIT INVESTMENT 1054J 2233546

66 ERICA 323H 2171463

U-2 COALITION 206C
MERIT FLORA 6078D

V D A R CEDAR WIND 8111
66 ERICA 61F

AOD	BW	205D	EPDs	CE	BW	WW	YW	MILK
5	78	704		+8.0	+1.3	+61	+93	+22



Lot 84

**YEARLING
84**

66 INVESTMENT 190M

MALE CKM 190M 2394832 APRIL 25 2024

MERIT INVESTMENT 1054J 2233546

66 IDELETTE 84G 2116681

U-2 COALITION 206C
MERIT FLORA 6078D

BAD LANDS ALLIANCE 44T
66 IDELETTE 163E

AOD	BW	205D	EPDs	CE	BW	WW	YW	MILK
6	78	666		+10.0	+0.5	+55	+84	+21



18F - DAM OF LOT 81



122F - DAM OF LOT 83



84G - DAM OF LOT 84



YEARLING
85

66 INVESTMENT 242M

MALE CKM 242M 2394848 APRIL 27 2024

MERIT INVESTMENT 1054J 2233546

U-2 COALITION 206C
MERIT FLORA 6078D

66 BLACKBIRD 486E 2005010

F-R CEDAR RIDGE 4210
66 BLACKBIRD 44C

AOD	BW	205D	EPDs	CE	BW	WW	YW	MILK
8	92	709		+3.0	+3.4	+57	+92	+21



YEARLING
86

66 INVESTMENT 163M

MALE CKM 163M 2394822 APRIL 23 2024

MERIT INVESTMENT 1054J 2233546

U-2 COALITION 206C
MERIT FLORA 6078D

66 BLACK LASS 261C 1867324

CONNELLY THUNDER
66 BLACK LASS 340A

AOD	BW	205D	EPDs	CE	BW	WW	YW	MILK
10	76	648		+12.0	-1.4	+49	+82	+26

ALL BULLS HAVE BEEN SEMEN TESTED
& BREEDING SOUNDNESS EVALUATED



486E

DAM OF
LOT 85



261C

DAM OF
LOT 86



607H

DAM OF
LOT 87



YEARLING
87

66 INVESTMENT 288M

MALE CKM 288M 2394866 APRIL 29 2024

MERIT INVESTMENT 1054J 2233546

U-2 COALITION 206C
MERIT FLORA 6078D

66 DUCHESS 607H 2178186

66 RIGHT TIME 326D
SOUTH FORK DUCHESS 74Z

AOD	BW	205D	EPDs	CE	BW	WW	YW	MILK
5	85	610		+5.0	+2.1	+49	+71	+19

**BUY A BULL & YOU COULD
WIN A 66 RANCH HEIFER!**

DRAW FOR BUYERS AFTER THE SALE

For all purchases made
Online - By Phone - In Person

DETAILS ON PAGE 9



Lot 88

**YEARLING
88**

66 INVESTMENT 286M

MALE CKM 286M 2394865 APRIL 29 2024

MERIT INVESTMENT 1054J 2233546

U-2 COALITION 206C
MERIT FLORA 6078D

66 BARBARA 189C 1867253

CONNELLY THUNDER
66 BARBARA 333A

AOD	BW	205D	EPDs	CE	BW	WW	YW	MILK
10	76	612		+12.0	-0.8	+45	+72	+21



Lot 89

**YEARLING
89**

66 INVESTMENT 224M

MALE CKM 224M 2394845 APRIL 26 2024

MERIT INVESTMENT 1054J 2233546

U-2 COALITION 206C
MERIT FLORA 6078D

66 ZARA 371C 1867430

V D A R CEDAR WIND 8111
66 ZARA 510A

AOD	BW	205D	EPDs	CE	BW	WW	YW	MILK
10	79	655		+10.0	+0.5	+49	+80	+23



189C

DAM OF
LOT 88



371C

DAM OF
LOT 89



204D

DAM OF
LOT 90



364C

DAM OF
LOT 91

**YEARLING
90**

66 INVESTMENT 271M

MALE CKM 271M 2394858 APRIL 28 2024

MERIT INVESTMENT 1054J 2233546

U-2 COALITION 206C
MERIT FLORA 6078D

66 COUNTESS 204D 1930138

V D A R CEDAR WIND 8111
66 COUNTESS 158B

AOD	BW	205D	EPDs	CE	BW	WW	YW	MILK
9	84	684		+6.0	+1.6	+62	+94	+27



Lot 91

**YEARLING
91**

66 INVESTMENT 86M

MALE CKM 86M 2394794 APRIL 20 2024

MERIT INVESTMENT 1054J 2233546

U-2 COALITION 206C
MERIT FLORA 6078D

66 BLACKBIRD 364C 1867422

66 ALLIANCE 17Z
DEER RIVER BLACKBIRD 44S

AOD	BW	205D	EPDs	CE	BW	WW	YW	MILK
10	78	682		+8.0	+1.6	+60	+89	+21



Lot 92

YEARLING
92

66 NO DOUBT 158M

MALE CKM 158M 2394819 APRIL 23 2024

HOOVER NO DOUBT X6 2203616

HOOVER NO DOUBT
BLKCP EMPRESS ELLSTON C344

66 COUNTESS 281E 1997329

COLE CREEK BLACK CEDAR 46P
BAD LANDS COUNTESS 6096S

AOD	BW	205D	EPDs	CE	BW	WW	YW	MILK
8	89	735		+1.0	+3.2	+61	+109	+18



Lot 93

YEARLING
93

66 NO DOUBT 11M

MALE CKM 11M 2394764 APRIL 13 2024

HOOVER NO DOUBT X6 2203616

HOOVER NO DOUBT
BLKCP EMPRESS ELLSTON C344

66 COUNTESS 371H 2171484

66 ALLIANCE 17Z
66 COUNTESS 583C

AOD	BW	205D	EPDs	CE	BW	WW	YW	MILK
5	81	714		+3.0	+3.2	+67	+116	+16

REFERENCE SIRE



9 sons sell

HOOVER NO DOUBT X6

EPDs	CE	BW	WW	YW	MILK	MCE
	-1.0	+4.4	+74	+134	+10	+15.0

TWO YEAR OLD SONS SELL AS LOTS 66-67



Lot 94

YEARLING
94

66 NO DOUBT 6M

MALE CKM 6M 2394762 APRIL 10 2024

HOOVER NO DOUBT X6 2203616

HOOVER NO DOUBT
BLKCP EMPRESS ELLSTON C344

66 LADY 313H 2171457

V D A R CEDAR WIND 8111
66 LADY 14C

AOD	BW	205D	EPDs	CE	BW	WW	YW	MILK
5	68	651		+11.0	-0.8	+54	+92	+17



281E - DAM OF LOT 92



371H - DAM OF LOT 93



313H - DAM OF LOT 94

YEARLING
95

66 NO DOUBT 218M

MALE CKM 218M 2394842 APRIL 26 2024

HOOVER NO DOUBT X6 2203616

HOOVER NO DOUBT
BLKCP EMPRESS ELLSTON C344

66 PRINCESS 42D 1929981

SOUTH FORK CONVERGENCE 217Y
SOUTH FORK PRINCESS 37Z

AOD	BW	205D	EPDs	CE	BW	WW	YW	MILK
9	93	658		-3.0	+5.1	+65	+114	+15



42D
DAM OF
LOT 95



129F
DAM OF
LOT 96



321F
DAM OF
LOT 97

YEARLING
96

66 NO DOUBT 47M

MALE CKM 47M 2394778 APRIL 17 2024

HOOVER NO DOUBT X6 2203616

HOOVER NO DOUBT
BLKCP EMPRESS ELLSTON C344

66 COUNTESS 129F 2058503

HOOVER DAM
66 COUNTESS 297D

AOD	BW	205D	EPDs	CE	BW	WW	YW	MILK
7	85	570		+4.0	+2.1	+46	+88	+17



75G
DAM OF
LOT 98



YEARLING
97

66 NO DOUBT 33M

MALE CKM 33M 2394772 APRIL 16 2024

HOOVER NO DOUBT X6 2203616

HOOVER NO DOUBT
BLKCP EMPRESS ELLSTON C344

66 SG JUMBOLEEN 321F 2058614

HOOVER DAM
COLE CREEK SG JUMBOLEEN 1066

AOD	BW	205D	EPDs	CE	BW	WW	YW	MILK
7	80	602		+5.0	+1.9	+50	+92	+18

YEARLING
98

66 NO DOUBT 265M

MALE CKM 265M 2394857 APRIL 28 2024

HOOVER NO DOUBT X6 2203616

HOOVER NO DOUBT
BLKCP EMPRESS ELLSTON C344

66 LASSIE 75G 2116676

HOOVER DAM
SOUTH FORK LASSIE 48Z

AOD	BW	205D	EPDs	CE	BW	WW	YW	MILK
6	86	584		+5.0	+1.7	+49	+90	+15



YEARLING
99

66 CHISM 188M
MALE CKM 188M 2394831 APRIL 25 2024

66 CHISM 48G 2116722

66 CHISM 1D
66 ROSEBUD 43B

66 DUCHESS 247K 2286682

BURNETT SPADE 169G
66 DUCHESS 486G

AOD	BW	205D	EPDs	CE	BW	WW	YW	MILK
3	79	701		+8.0	+0.8	+56	+84	+18

YEARLING
100

66 CHISM 37M
MALE CKM 37M 2394774 APRIL 16 2024

66 CHISM 48G 2116722

66 CHISM 1D
66 ROSEBUD 43B

66 BARBARA 46K 2286587

WERNER FLAT TOP 4136
SOUTH FORK BARBARA 349Z

AOD	BW	205D	EPDs	CE	BW	WW	YW	MILK
3	71	617		+15.0	-1.7	+46	+78	+19

REFERENCE SIRE



66 CHISM 48G

MALE CKM 48G 2116722 APRIL 16 2019

66 CHISM 1D 1929946

STUART CHISM 82A
66 DUCHESS 249A

66 ROSEBUD 43B 1819716

66 ALLIANCE 17Z
SOUTH FORK ROSEBUD 153X

EPDs	CE	BW	WW	YW	MILK	MCE
	+13.0	-1.0	+48	+68	+9	+18.0

A walking bull at the ranch raised by us, a "1D" son. 1D has quickly risen to the top at our place. Raising sons like 48G that are just the right type. Both 1D and 48G stamp their calves the same. Deep, soggy, soft made, moderate, easy to look at Angus cattle. Foot quality is very strong, udders on our milking daughters have been absolutely outstanding! 48G's dam is about as good as they come, expect females out of the 48G sons to remain in the herd for a long time. With very moderate birthweight on the dam's side and 1D having moderate birth, feel safe using 48G progeny on 1st calf heifers. Bull calves average birthweight is 76 lbs. Heifer calves is 73 lbs.

TWO YEAR OLD SON SELLS AS LOT 38



46K
DAM OF
LOT 100





YEARLING
101

66 CHISM 118M

MALE CKM 118M 2394807 APRIL 21 2024

66 CHISM 48G 2116722

66 CHISM 1D
66 ROSEBUD 43B

66 LADY FANNY 598K 2291705

F-R 5099 8096F
66 LADY FANNY 297H

AOD	BW	205D	EPDs	CE	BW	WW	YW	MILK
3	72	600		+12.0	-1.2	+49	+73	+16



YEARLING
103

66 CHISM 244M

MALE CKM 244M 2394849 APRIL 27 2024

66 CHISM 48G 2116722

66 CHISM 1D
66 ROSEBUD 43B

66 BLACKBIRD 539K 2291740

66 ALLIANCE 172F
66 BLACKBIRD 456G

AOD	BW	205D	EPDs	CE	BW	WW	YW	MILK
3	76	597		+8.0	+0.7	+52	+80	+14



YEARLING
102

66 CHISM 57M

MALE CKM 57M 2394783 APRIL 18 2024

66 CHISM 48G 2116722

66 CHISM 1D
66 ROSEBUD 43B

66 MINA 599K 2291703

66 ALLIANCE 172F
66 MINA 9017G

AOD	BW	205D	EPDs	CE	BW	WW	YW	MILK
3	78	608		+9.0	+0.7	+50	+79	+14



YEARLING
104

66 CHISM 66M

MALE CKM 66M 2394788 APRIL 19 2024

66 CHISM 48G 2116722

66 CHISM 1D
66 ROSEBUD 43B

66 ROSEBUD 71K 2286601

DDA EMBLAZON 27C
66 ROSEBUD 8055F

AOD	BW	205D	EPDs	CE	BW	WW	YW	MILK
3	74	640		+9.0	+1.2	+53	+84	+17

CALVING EASE BULLS BW IN **BOLD** PRINT





YEARLING
105

66 INCREDIBLE 299M

MALE CKM 299M 2394871 APRIL 30 2024

MERIT INCREDIBLE 1020J 2233532

KR INCREDIBLE 8149
MERIT FLORA 6078D

66 ROSEBUD 385A 1739010

BAD LANDS DAQUANTAE 26L
DEER RIVER ROSEBUD 463W

AOD	BW	205D	EPDs	CE	BW	WW	YW	MILK
12	74	744		+7.0	+0.1	+57	+93	+29



385A

DAM OF
LOT 105



YEARLING
106

66 INCREDIBLE 89M

MALE CKM 89M 2394797 APRIL 20 2024

MERIT INCREDIBLE 1020J 2233532

KR INCREDIBLE 8149
MERIT FLORA 6078D

66 STETSON 38J 2245672

HOOVER CUT ABOVE P427
66 STETSON 62G

AOD	BW	205D	EPDs	CE	BW	WW	YW	MILK
4	75	709		+10.0	-0.3	+61	+106	+33

REFERENCE SIRE



14 sons sell

MERIT INCREDIBLE 1020J

EPDs	CE	BW	WW	YW	MILK	MCE
	+8.0	+0.0	+73	+131	+33	+13.0

A walking bull purchased at Merit Cattle Co. We fell in love with 1020J for his length of body, muscle pattern and huge middle as well as an incredible hip. All this with a very moderate birthweight. Once again we chose 1020J for all his great qualities but were absolutely convinced to own him with the dam on the bottom of his pedigree, Flora 6078D. We just cannot get enough of the Flora bred females at Merit. Exceptional udder quality from this line. You will want to keep these daughters. Big middled, hairy females with impeccable udders. The kind we are striving to build here at 66 Ranch. Bull calves average birthweight is 80 lbs. Heifers calves is 75 lbs. Owned with Murray Ranches.

TWO YEAR OLD SONS SELL AS LOTS 58-59



DAM
6078D

AVERAGE BLACK ANGUS EPDS FOR ALL CALVES BORN IN 2024

EPDs	CE	BW	WW	YW	MILK	MCE
	+3.4	+2.0	+55	+98	+23	+6.4



66 RANCH PAIR SALE

250 HEAD
SELLING AS COMMERCIAL

• 1ST CALVERS • 2ND CALVERS • COWS

MAY 9/25

BOW SLOPE SHIPPING & ONLINE



Lot 107

YEARLING
107

66 INCREDIBLE 302M

MALE CKM 302M 2394873 APRIL 30 2024

MERIT INCREDIBLE 1020J 2233532

KR INCREDIBLE 8149
MERIT FLORA 6078D

66 ERICA 40H 2171349

V D A R CEDAR WIND 8111
66 ERICA 118F

AOD	BW	205D	EPDs	CE	BW	WW	YW	MILK
5	79	722		+9.0	+0.2	+64	+111	+29



Lot 109

YEARLING
109

66 INCREDIBLE 13M

MALE CKM 13M 2394765 APRIL 13 2024

MERIT INCREDIBLE 1020J 2233532

KR INCREDIBLE 8149
MERIT FLORA 6078D

SOUTH FORK BARBARA 349Z 1677394

WK BOBCAT
DEER RIVER BARBARA 477N

AOD	BW	205D	EPDs	CE	BW	WW	YW	MILK
13	60	653		+16.0	-3.8	+47	+85	+29



Lot 108

YEARLING
108

66 INCREDIBLE 233M

MALE CKM 233M 2394846 APRIL 27 2024

MERIT INCREDIBLE 1020J 2233532

KR INCREDIBLE 8149
MERIT FLORA 6078D

66 LASSIE 359J 2231369

66 ALLIANCE 17Z
66 LASSIE 245B

AOD	BW	205D	EPDs	CE	BW	WW	YW	MILK
4	73	732		+6.0	+0.9	+71	+119	+26



Lot 110

YEARLING
110

66 INCREDIBLE 281M

MALE CKM 281M 2394863 APRIL 29 2024

MERIT INCREDIBLE 1020J 2233532

KR INCREDIBLE 8149
MERIT FLORA 6078D

66 COUNTESS 93F 2058475

V D A R CEDAR WIND 8111
66 COUNTESS 117D

AOD	BW	205D	EPDs	CE	BW	WW	YW	MILK
7	87	648		+8.0	+0.7	+59	+106	+27



40H - DAM OF LOT 107



359J - DAM OF LOT 108



349Z - DAM OF LOT 109



YEARLING
111

66 INCREDIBLE 223M

MALE CKM 223M 2394844 APRIL 26 2024

MERIT INCREDIBLE 1020J 2233532

KR INCREDIBLE 8149
MERIT FLORA 6078D

66 PEARL 420C 1867473

BOYD RESUME 9008
BAD LANDS PEARL 92X

AOD	BW	205D	EPDs	CE	BW	WW	YW	MILK
10	86	617		+6.0	+1.2	+49	+86	+30



420C
DAM OF
LOT 111



417G
DAM OF
LOT 112



YEARLING
112

66 INCREDIBLE 297M

MALE CKM 297M 2394870 APRIL 30 2024

MERIT INCREDIBLE 1020J 2233532

KR INCREDIBLE 8149
MERIT FLORA 6078D

66 PRINCESS 417G 2129266

WK BOBCAT
66 PRINCESS 197E

AOD	BW	205D	EPDs	CE	BW	WW	YW	MILK
6	75	596		+13.0	-1.3	+46	+89	+27



677H
DAM OF
LOT 113



YEARLING
113

66 INCREDIBLE 311M

MALE CKM 311M 2394877 APRIL 30 2024

MERIT INCREDIBLE 1020J 2233532

KR INCREDIBLE 8149
MERIT FLORA 6078D

66 PEARL 677H 2178151

REID ANGUS REBORN 39D
66 PEARL 420C

AOD	BW	205D	EPDs	CE	BW	WW	YW	MILK
5	83	683		+9.0	-0.1	+58	+103	+28

BULL VIEWING

We welcome you to view the bulls
before the sale at the Ranch.

Bulls will be available at Bow Slope Auction
in Brooks on Tuesday afternoon, April 15.



YEARLING
114

66 INCREDIBLE 291M

MALE CKM 291M 2394867 APRIL 29 2024

MERIT INCREDIBLE 1020J 2233532

KR INCREDIBLE 8149
MERIT FLORA 6078D

66 BARBARA 122C 1867182

S A V ANGUS VALLEY 1867
DEER RIVER BARBARA 55W

AOD	BW	205D	EPDs	CE	BW	WW	YW	MILK
10	91	624		+3.0	+2.4	+57	+106	+24



122C
DAM OF
LOT 114



10W
DAM OF
LOT 115



YEARLING
115

66 INCREDIBLE 23M

MALE CKM 23M 2394769 TWIN APRIL 14 2024

MERIT INCREDIBLE 1020J 2233532

KR INCREDIBLE 8149
MERIT FLORA 6078D

DEER RIVER BLACKBIRD 10W 1521712

DEER RIVER 145P RIGHTTIME 325T
DEER RIVER BLACKBIRD 138T

AOD	BW	205D	EPDs	CE	BW	WW	YW	MILK
16	61	674		+6.0	+0.9	+50	+88	+27



120J
DAM OF
LOT 116



YEARLING
116

66 INCREDIBLE 113M

MALE CKM 113M 2394806 APRIL 21 2024

MERIT INCREDIBLE 1020J 2233532

KR INCREDIBLE 8149
MERIT FLORA 6078D

66 ZARA 120J 2231272

HF RISKY BUSINESS 135G
66 ZARA 371C

AOD	BW	205D	EPDs	CE	BW	WW	YW	MILK
4	85	611		+5.0	+1.5	+57	+107	+26

- SIGHT UNSEEN PURCHASES -
YOUR SATISFACTION
IS GUARANTEED

Contact 66 Ranch Ltd.
Kelsey 403-362-0672 or Malissa 403-501-9358
or any Sales Staff listed on Page 1



**YEARLING
117**

66 INTENTIONAL 182M
MALE CKM 182M 2403963 APRIL 24 2024

MERIT INTENTIONAL 2047K 2273620

MERIT INTENT 37H
MERIT COUNTESS 8114F

66 WJ DELLA 435J 2238315

66 BOBCAT 271B
66 WJ DELLA 174A

AOD	BW	205D	EPDs	CE	BW	WW	YW	MILK
4	70	697		+8.0	+0.2	+56	+90	+27



435J

DAM OF
LOT 117



**YEARLING
118**

66 INTENTIONAL 216M
MALE CKM 216M 2398852 APRIL 26 2024

MERIT INTENTIONAL 2047K 2273620

MERIT INTENT 37H
MERIT COUNTESS 8114F

66 LADY FANNY 307H 2171453

CONNELLY THUNDER
66 LADY FANNY 87F

AOD	BW	205D	EPDs	CE	BW	WW	YW	MILK
5	86	690		+3.0	+2.8	+55	+95	+26

REFERENCE SIRE



MERIT INTENTIONAL 2047K

MALE CRSN 2047K 2273620 FEBRUARY 12 2022

MERIT INTENT 37H 2161601

GDAR INSIGHT 7201
MERIT FLORA 6078D

MERIT COUNTESS 8114F 2066443

HF UNIT 14C
MERIT COUNTESS 6087

EPDs	CE	BW	WW	YW	MILK	MCE
	-1.0	+4.1	+56	+93	+28	+6.0

A walking bull at our place purchased from Merit Cattle Co. We purchased this bull for his super strong maternal pedigree. Insight, Range Boss, Tiger on the top side. Countess, Rosebud, Flora on the bottom side. Dam Countess 8114F had a very good grade from me when touring the Merit cow herd. The paternal sire's dam is once again Flora 6078D. There will be no surprises of what the female progeny will look like with all these great females stacked in 2047K's pedigree. The bulls off of 2047K are all stamped the same, soft made, soggy middle, big topped, big hipped, hairy, good headed bulls. Take a good look at this sire group! Bull calves average birthweight is 87 lbs. Heifer calves is 79 lbs.



PATERNAL
GRANDAM
6078D

**CHECK OUR WEBSITE
WWW.66RANCHLTD.COM
FOR SALE UPDATES**



307H

DAM OF
LOT 118



YEARLING
119

66 INTENTIONAL 210M

MALE CKM 210M 2398851 APRIL 26 2024

MERIT INTENTIONAL 2047K 2273620

MERIT INTENT 37H
MERIT COUNTESS 8114F

66 ROSEBUD 239H 2171426

V D A R CEDAR WIND 8111
66 ROSEBUD 166F

AOD	BW	205D	EPDs	CE	BW	WW	YW	MILK
5	85	676		+3.0	+2.5	+55	+88	+26



YEARLING
120

66 INTENTIONAL 110M

MALE CKM 110M 2398848 APRIL 21 2024

MERIT INTENTIONAL 2047K 2273620

MERIT INTENT 37H
MERIT COUNTESS 8114F

66 BEAUTY 695F 2058757

COLE CREEK RIDGE LINE 216
BAD LANDS BEAUTY 1147Y

AOD	BW	205D	EPDs	CE	BW	WW	YW	MILK
7	97	687		-4.0	+5.2	+61	+100	+24



239H
DAM OF
LOT 119



695F
DAM OF
LOT 120



85J
DAM OF
LOT 121



YEARLING
121

66 INTENTIONAL 234M

MALE CKM 234M 2404309 APRIL 27 2024

MERIT INTENTIONAL 2047K 2273620

MERIT INTENT 37H
MERIT COUNTESS 8114F

66 ROSETTE 85J 2231261

HOOVER DAM
66 ROSETTE 460G

AOD	BW	205D	EPDs	CE	BW	WW	YW	MILK
4	88	653		+1.0	+2.9	+54	+94	+26



Lot 122



Lot 123

YEARLING
122

66 INTENTIONAL 296M
MALE CKM 296M 2398853 APRIL 29 2024

MERIT INTENTIONAL 2047K 2273620

MERIT INTENT 37H
MERIT COUNTESS 8114F

66 BLACKBIRD 4148B 1813929

BAD LANDS ALLIANCE 326X
DEER RIVER BLACKBIRD 71S

AOD	BW	205D	EPDs	CE	BW	WW	YW	MILK
11	86	625		+1.0	+3.9	+44	+75	+24

YEARLING
123

66 INTENTIONAL 308M
MALE CKM 308M 2398854 APRIL 30 2024

MERIT INTENTIONAL 2047K 2273620

MERIT INTENT 37H
MERIT COUNTESS 8114F

SOUTH FORK COUNTESS 214Z 1677279

LOOKOUT CANUCK 65U
BAD LANDS COUNTESS 9017W

AOD	BW	205D	EPDs	CE	BW	WW	YW	MILK
13	84	605		+3.0	+2.6	+41	+63	+23



REFERENCE SIRE



30 sons sell

MERIT KINGPIN 32H

EPDs	CE	BW	WW	YW	MILK	MCE
	+1.0	+3.8	+67	+105	+26	+7.0

YEARLING SONS SELL AS LOTS 1-10 & 124-135
TWO YEAR OLD SONS SELL AS LOTS 40-47

YEARLING
124

66 KINGPIN 171M
MALE CKM 171M 2394825 APRIL 24 2024

MERIT KINGPIN 32H 2149400

MERIT KINGSMAN 8030F
MERIT BLACKCLASS 6060D

66 PLUS 86H 2171367

66 CHISM 1D
66 PLUS 386D

AOD	BW	205D	EPDs	CE	BW	WW	YW	MILK
5	79	707		+8.0	+1.1	+64	+98	+20



Lot 125

YEARLING
125

66 KINGPIN 161M
MALE CKM 161M 2394821 APRIL 23 2024

MERIT KINGPIN 32H 2149400

MERIT KINGSMAN 8030F
MERIT BLACKCLASS 6060D

SOUTH FORK LASSIE 2Z 1677086

F-R 5024 LAD 9228
BAD LANDS LASSIE 24X

AOD	BW	205D	EPDs	CE	BW	WW	YW	MILK
13	92	756		+2.0	+3.0	+63	+102	+27



2Z

DAM OF
LOT 125



Lot 126

YEARLING
126

MERIT KINGPIN 32H 2149400

66 COUNTESS 104F 2064610

AOD	BW	205D	EPDs	CE	BW	WW	YW	MILK
7	91	686		+0.0	+3.2	+53	+81	+21

66 KINGPIN 99M

MALE CKM 99M 2394802 APRIL 20 2024

MERIT KINGSMAN 8030F
MERIT BLACKCLASS 6060D

BAD LANDS DAQUANTAE 26L
BAD LANDS COUNTESS 350N



Lot 127

YEARLING
127

MERIT KINGPIN 32H 2149400

66 DUCHESS 62H 2171358

AOD	BW	205D	EPDs	CE	BW	WW	YW	MILK
5	88	712		+5.0	+2.3	+55	+88	+27

66 KINGPIN 300M

MALE CKM 300M 2394872 APRIL 30 2024

MERIT KINGSMAN 8030F
MERIT BLACKCLASS 6060D

F-R ATHABASCA 5051
66 DUCHESS 169F



104F

DAM OF
LOT 126



62H

DAM OF
LOT 127



14H

DAM OF
LOT 128



Lot 128

YEARLING
128

MERIT KINGPIN 32H 2149400

66 BLACKBIRD 14H 2171336

AOD	BW	205D	EPDs	CE	BW	WW	YW	MILK
5	73	649		+8.0	+1.0	+57	+93	+26

66 KINGPIN 251M

MALE CKM 251M 2394852 APRIL 27 2024

MERIT KINGSMAN 8030F
MERIT BLACKCLASS 6060D

V D A R CEDAR WIND 8111
66 BLACKBIRD 215F



109F

DAM OF
LOT 129

YEARLING
129

MERIT KINGPIN 32H 2149400

66 MINA 109F 2058489

AOD	BW	205D	EPDs	CE	BW	WW	YW	MILK
7	93	748		+3.0	+3.1	+60	+98	+27

66 KINGPIN 246M

MALE CKM 246M 2394851 APRIL 27 2024

MERIT KINGSMAN 8030F
MERIT BLACKCLASS 6060D

COLE CREEK CEDAR RIDGE 181
66 MINA 461A



Lot 130



Lot 132

YEARLING
130

66 KINGPIN 136M

MALE CKM 136M 2394813 APRIL 22 2024

MERIT KINGPIN 32H 2149400

MERIT KINGSMAN 8030F
MERIT BLACKCLASS 6060D

66 BLACKBIRD 429H 2171513

CONNELLY RIGHT ANSWER 746
66 BLACKBIRD 278F

AOD	BW	205D	EPDs	CE	BW	WW	YW	MILK
5	89	672		+1.0	+3.2	+59	+95	+24

YEARLING
132

66 KINGPIN 273M

MALE CKM 273M 2394860 APRIL 28 2024

MERIT KINGPIN 32H 2149400

MERIT KINGSMAN 8030F
MERIT BLACKCLASS 6060D

66 BLACKCAP 391G 2129259

WK BOBCAT
BAD LANDS BLACKCAP 4074P

AOD	BW	205D	EPDs	CE	BW	WW	YW	MILK
6	84	675		+5.0	+2.7	+57	+94	+27



Lot 131



Lot 133

YEARLING
131

66 KINGPIN 68M

MALE CKM 68M 2394789 APRIL 19 2024

MERIT KINGPIN 32H 2149400

MERIT KINGSMAN 8030F
MERIT BLACKCLASS 6060D

66 BARBARA 499G 2113007

66 CEDAR WIND 178C
66 BARBARA 440D

AOD	BW	205D	EPDs	CE	BW	WW	YW	MILK
6	79	698		+7.0	+1.5	+64	+101	+26

YEARLING
133

66 KINGPIN 148M

MALE CKM 148M 2394816 APRIL 23 2024

MERIT KINGPIN 32H 2149400

MERIT KINGSMAN 8030F
MERIT BLACKCLASS 6060D

66 ERICA 2B 1814473

BAD LANDS ALLIANCE 14W
BAD LANDS ERICA 10K

AOD	BW	205D	EPDs	CE	BW	WW	YW	MILK
11	84	628		+4.0	+2.2	+55	+88	+22



499G - DAM OF LOT 131



391G - DAM OF LOT 132



2B - DAM OF LOT 133

YEARLING
134

66 KINGPIN 94M

MALE CKM 94M 2394799 APRIL 20 2024

MERIT KINGPIN 32H 2149400

MERIT KINGSMAN 8030F
MERIT BLACKCLASS 6060D

66 LADY 442C 1867495

HOOVER DAM
BAD LANDS LADY 223M

AOD	BW	205D	EPDs	CE	BW	WW	YW	MILK
10	83	551		+5.0	+1.4	+39	+73	+25



Lot 135



442C

DAM OF
LOT 134



4G

DAM OF
LOT 135

YEARLING
135

66 KINGPIN 44M

MALE CKM 44M 2394777 TWIN APRIL 17 2024

MERIT KINGPIN 32H 2149400

MERIT KINGSMAN 8030F
MERIT BLACKCLASS 6060D

66 JUANADA 4G 2112949

SHIPWHEEL CHINOOK
COLE CREEK CL JUANADA 815

AOD	BW	205D	EPDs	CE	BW	WW	YW	MILK
6	73	596		+7.0	+1.1	+55	+90	+27



REFERENCE SIRE



20 sons sell

MERIT RANCH WATER 1067J

EPDs	CE	BW	WW	YW	MILK	MCE
	+11.0	-1.9	+46	+75	+25	+13.0

YEARLING SONS SELL AS LOTS 11-18 & 136-144
TWO YEAR OLD SONS SELL AS LOTS 48-51



Lot 136

YEARLING
136

66 RANCH WATER 42M

MALE CKM 42M 2394776 APRIL 17 2024

MERIT RANCH WATER 1067J 2211703

BLAIR'S THUNDERSTORM 807F
MERIT SOCIALITE 8196F

66 LADY 272K 2286690

66 CHISM 1D
66 CEDAR RIDGE 534E

AOD	BW	205D	EPDs	CE	BW	WW	YW	MILK
3	73	703		+9.0	+0.0	+58	+93	+21



Lot 137

YEARLING
137

66 RANCH WATER 16M

MALE CKM 16M 2394766 APRIL 13 2024

MERIT RANCH WATER 1067J 2211703

BLAIR'S THUNDERSTORM 807F
MERIT SOCIALITE 8196F

66 ERICA 308K 2286707

MERIT KINGPIN 32H
66 ERICA 142G

AOD	BW	205D	EPDs	CE	BW	WW	YW	MILK
3	69	662		+9.0	-0.1	+55	+84	+26



Lot 139

YEARLING
139

66 RANCH WATER 7M

MALE CKM 7M 2394763 APRIL 11 2024

MERIT RANCH WATER 1067J 2211703

BLAIR'S THUNDERSTORM 807F
MERIT SOCIALITE 8196F

66 COUNTESS 6K 2286568

66 CHISM 1D
66 COUNTESS 64F

AOD	BW	205D	EPDs	CE	BW	WW	YW	MILK
3	71	553		+10.0	-1.1	+50	+82	+18



Lot 138

YEARLING
138

66 RANCH WATER 64M

MALE CKM 64M 2394786 APRIL 18 2024

MERIT RANCH WATER 1067J 2211703

BLAIR'S THUNDERSTORM 807F
MERIT SOCIALITE 8196F

66 ERICA 84K 2286606

66 CHISM 1D
66 ERICA 2B

AOD	BW	205D	EPDs	CE	BW	WW	YW	MILK
3	71	635		+8.0	+0.1	+59	+95	+17



Lot 140

YEARLING
140

66 RANCH WATER 30M

MALE CKM 30M 2394771 APRIL 16 2024

MERIT RANCH WATER 1067J 2211703

BLAIR'S THUNDERSTORM 807F
MERIT SOCIALITE 8196F

66 ROSEBUD 96K 2286612

HOOVER NO DOUBT X6
66 ROSEBUD 6049D

AOD	BW	205D	EPDs	CE	BW	WW	YW	MILK
3	82	655		+4.0	+1.9	+58	+97	+20



308K - DAM OF LOT 137



84K - DAM OF LOT 138



6K - DAM OF LOT 139



YEARLING
141

66 RANCH WATER 196M

MALE CKM 196M 2394833 APRIL 25 2024

MERIT RANCH WATER 1067J 2211703

BLAIR'S THUNDERSTORM 807F
MERIT SOCIALITE 8196F

66 ROSETTE 212K 2286669

HOOVER CUT ABOVE P427
66 ROSETTE 598H

AOD	BW	205D	EPDs	CE	BW	WW	YW	MILK
3	71	606		+10.0	-0.7	+46	+79	+26

YEARLING
143

66 RANCH WATER 200M

MALE CKM 200M 2394836 APRIL 25 2024

MERIT RANCH WATER 1067J 2211703

BLAIR'S THUNDERSTORM 807F
MERIT SOCIALITE 8196F

66 ROSEBUD 108K 2292087

HOOVER NO DOUBT X6
66 ROSEBUD 9035G

AOD	BW	205D	EPDs	CE	BW	WW	YW	MILK
3	61	564		+11.0	-1.4	+49	+79	+16

212K

DAM OF
LOT 141



113K

DAM OF
LOT 144



YEARLING
142

66 RANCH WATER 104M

MALE CKM 104M 2394804 APRIL 21 2024

MERIT RANCH WATER 1067J 2211703

BLAIR'S THUNDERSTORM 807F
MERIT SOCIALITE 8196F

66 BARBARA 564K 2291978

66 ALLIANCE 40G
66 BARBARA 559B

AOD	BW	205D	EPDs	CE	BW	WW	YW	MILK
3	70	545		+9.0	-0.5	+42	+66	+20

YEARLING
144

66 RANCH WATER 97M

MALE CKM 97M 2394801 APRIL 20 2024

MERIT RANCH WATER 1067J 2211703

BLAIR'S THUNDERSTORM 807F
MERIT SOCIALITE 8196F

66 JUANADA 113K 2297265

66 CEDAR RIDGE 151F
66 JUANADA 4G

AOD	BW	205D	EPDs	CE	BW	WW	YW	MILK
3	72	565		+11.0	-1.3	+37	+66	+27

REFERENCE SIRE



1 son sells

66 ABSOLUTE 120K

MALE CKM 120K 2286281 APRIL 22 2022

HOOVER NO DOUBT X6 2203616

HOOVER NO DOUBT
BLKCP EMPRESS ELLSTON C344

66 DUCHESS 169F 2058524

BAD LANDS ALLIANCE 14W
66 DUCHESS 75B

EPDs	CE	BW	WW	YW	MILK	MCE
	-1.0	+4.1	+56	+93	+28	+6.0

A bull that sold through our 2023 Spring Sale purchased by Merit Cattle Co. We saw this bull again last spring and thought so much of him that we decided to draw some semen off of him to use in our herd. Incredible foot, muscle expression, great hip and his dam has proven herself here at the ranch, and is heading to our donor pen. Super maternal pedigree, with the growth and performance we all want in the steer pen. Expect to see a lot more progeny here out of 120K. Bull calves average birthweight is 78 lbs. Heifer calves is 79 lbs.



DAM
169F



Lot 145

YEARLING
145

66 ABSOLUTE 120K 2286281

MERIT JILT 2005K 2273249

66 NO DOUBT 96M

MALE CKM 96M 2394800 APRIL 20 2024

HOOVER NO DOUBT X6
66 DUCHESS 169F

W SUNRISE EXECUTIVE LAW 507H
MERIT JILT 9069G

AOD	BW	205D	EPDs	CE	BW	WW	YW	MILK
3	77	763		+6.0	+1.2	+78	+127	+24



2005K
DAM OF
LOT 145

66 RANCH FALL BULL & FEMALE SALE

- COMING 2 YEAR OLD BULLS FROM OUR MAY CALVING PROGRAM
- BRED HEIFERS • 2ND CALVERS

DECEMBER 10/25

BOW SLOPE SHIPPING & ONLINE



REFERENCE SIRE



4 sons sell

MERIT THUNDERBIRD 2071K

MALE TJL 2071K 2273359 FEBRUARY 16 2022

BLAIR'S THUNDERSTORM 807F 2087267

PM THUNDERSTRUCK 22'13
S A V MADAME PRIDE 0151

MERIT LADY FANNY 6017D 1934686

BAR S RANGE BOSS 4002
MERIT LADY FANNY 4100

EPDs	CE	BW	WW	YW	MILK	MCE
	+0.0	+3.6	+53	+92	+25	+4.0

A walking bull at the ranch purchased from Merit Cattle Co. 2071K was a selection at their 2023 sale by us for the exceptional foot that 2071K walked on. Excellent heel, straight toes, and great leg structure makes him travel like a cat. 2071K's grand dams udder is exceptional as well. 2071K's progeny are soft made, easy fleshing, big hipped cattle. A real nice sire group out of 2071K. Bull calves average birthweight is 85 lbs. Heifer calves is 80 lbs.



DAM
6017D



Lot 146

YEARLING
146

66 THUNDERSTORM 51M

MALE CKM 51M 2404083 APRIL 17 2024

MERIT THUNDERBIRD 2071K 2273359

BLAIR'S THUNDERSTORM 807F
MERIT LADY FANNY 6017D

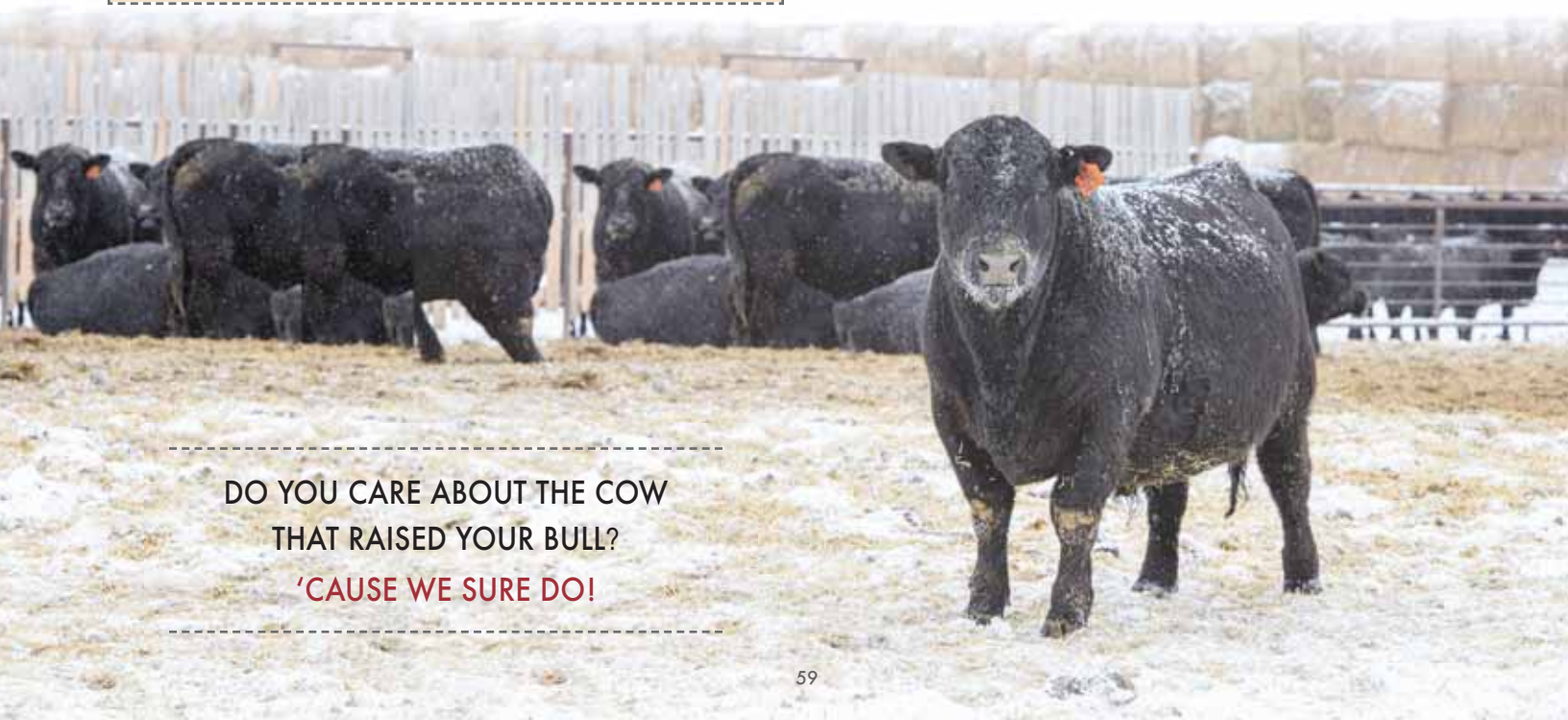
66 BLACKCAP 260J 2231330

66 ALLIANCE 17Z
BAD LANDS BLACKCAP 4074P

AOD	BW	205D	EPDs	CE	BW	WW	YW	MILK
4	85	726		-1.0	+4.1	+60	+99	+24



260J
DAM OF
LOT 146



DO YOU CARE ABOUT THE COW
THAT RAISED YOUR BULL?
'CAUSE WE SURE DO!



Lot 147



Lot 148

YEARLING
147

66 THUNDERBIRD 124M

MALE CKM 124M 2404137 APRIL 22 2024

MERIT THUNDERBIRD 2071K 2273359

BLAIR'S THUNDERSTORM 807F
MERIT LADY FANNY 6017D

MAR MAC LILY 64J 2204482

MERIT STONEY CREEK 7035E
MAR MAC LILY 41D

AOD	BW	205D	EPDs	CE	BW	WW	YW	MILK
4	80	705		+2.0	+2.8	+55	+93	+26

YEARLING
148

66 THUNDERBIRD 282M

MALE CKM 282M 2404135 APRIL 29 2024

MERIT THUNDERBIRD 2071K 2273359

BLAIR'S THUNDERSTORM 807F
MERIT LADY FANNY 6017D

66 MIDDLEBROOK 195J 2238285

BANDURA MR RESOURCE 173G
66 MIDDLEBROOK 164F

AOD	BW	205D	EPDs	CE	BW	WW	YW	MILK
4	89	660		-1.0	+4.0	+60	+104	+19



64J - DAM OF LOT 147



195J - DAM OF LOT 148



283J - DAM OF LOT 149



Lot 149

YEARLING
149

66 THUNDERSTORM 91M

MALE CKM 91M 2404082 APRIL 20 2024

MERIT THUNDERBIRD 2071K 2273359

BLAIR'S THUNDERSTORM 807F
MERIT LADY FANNY 6017D

66 ZARA 283J 2231337

66 ALLIANCE 17Z
DEER RIVER ZARA 119R

AOD	BW	205D	EPDs	CE	BW	WW	YW	MILK
4	77	606		+3.0	+2.1	+46	+79	+21

REFERENCE SIRE



2 sons sell

W SUNRISE DUECE 773K

MALE TMP 773K 2279414 FEBRUARY 02 2022

SSS DUECE 2H 2178874

PEAK DOT ATTRACTIVE 186F
U-2 ROSEBUD 157C

W SUNRISE LADY 665H 2218481

PM EXECUTIVE DECISION 5'17
BAR-E-L LADY 139C

EPDs	CE	BW	WW	YW	MILK	MCE
	+4.0	+3.1	+52	+100	+22	+10.0



Lot 150

YEARLING
150

66 DUECE 214M

MALE CKM 214M 2404136 APRIL 26 2024

W SUNRISE DUECE 773K 2279414

SSS DUECE 2H
W SUNRISE LADY 665H

66 ZARA JUMBO 621J 2238419

66 PAYWEIGHT 134G
66 ZARA JUMBO 127F

AOD	BW	205D	EPDs	CE	BW	WW	YW	MILK
4	88	665		+0.0	+4.1	+57	+104	+19

**TIED UP SALE DAY? NO PROBLEM!
GIVE US A CALL OR WATCH
& BID ONLINE @ DLMS.CA**



621J
DAM OF
LOT 150



Lot 151

YEARLING
151

66 DUECE 267M

MALE CKM 267M 2404300 APRIL 28 2024

W SUNRISE DUECE 773K 2279414

SSS DUECE 2H
W SUNRISE LADY 665H

66 ROSEBUD 226J 2231316

HF RISKY BUSINESS 135G
66 ROSEBUD 516C

AOD	BW	205D	EPDs	CE	BW	WW	YW	MILK
4	86	667		+4.0	+2.7	+52	+98	+21



226J
DAM OF
LOT 151

REFERENCE SIRE



5 sons sell

MC CUMBER BELIEVE 1169

MALE IMP 1169J 2287583 FEBRUARY 04 2021

MC CUMBER ZODIAC 9119 19505189

O C C ZODIAC 655Z
MISS WIX 2003 OF MC CUMBER

MISS WIX 9019 OF MC CUMBER 19573211

MC CUMBER TREMENDOUS 2008
MISS WIX 7126 OF MC CUMBER

EPDs	CE	BW	WW	YW	MILK	MCE
	+4.0	+3.2	+49	+89	+22	+1.0

A walking bull we purchased from McCumber Angus Ranch. A calving ease bull with a ton of performance. An incredibly beautiful head on this bull, with as much style, rib capacity and ease of flesh as you will find in a herd bull. We purchased this bull because of his maternal greatness, quoted from the footnotes in their catalog "1169 represents well what our program is all about. Stacking as many top cows into the pedigree as possible. It can't get much better than this here." Multiple, multiple donor cows on both the top and bottom side of his pedigree. And the other neat thing is we seen 5 of the 6 cows in the front of 1169's pedigree on the ground at their ranch. Bull calves average birthweight is 83 lbs. Heifer calves is 78 lbs.

GRANDAM
7126



FULL
SISTER
8004



390F
DAM OF
LOT 153



Lot 152

YEARLING
152

66 ZODIAC 285M

MALE CKM 285M 2394864 APRIL 29 2024

MC CUMBER BELIEVE 1169 2287583

MC CUMBER ZODIAC 9119
MISS WIX 9019 OF MC CUMBER

66 COUNTESS 96F 2058480

HOOVER DAM
66 COUNTESS 204D

AOD	BW	205D	EPDs	CE	BW	WW	YW	MILK
7	86	791		+4.0	+2.2	+59	+100	+28



96F
DAM OF
LOT 152



Lot 153

YEARLING
153

66 ZODIAC 222M

MALE CKM 222M 2394843 APRIL 26 2024

MC CUMBER BELIEVE 1169 2287583

MC CUMBER ZODIAC 9119
MISS WIX 9019 OF MC CUMBER

66 BLACKBIRD 390F 2058644

HOOVER DAM
66 BLACKBIRD 329D

AOD	BW	205D	EPDs	CE	BW	WW	YW	MILK
7	86	682		+2.0	+3.1	+50	+94	+23



Lot 154

YEARLING
154

66 ZODIAC 211M

MALE CKM 211M 2394840 APRIL 26 2024

MC CUMBER BELIEVE 1169 2287583

66 ZARA 284G 2121565

MC CUMBER ZODIAC 9119
MISS WIX 9019 OF MC CUMBER

66 SEVEN SON 26D
66 ZARA 9C

AOD	BW	205D	EPDs	CE	BW	WW	YW	MILK
6	87	693		+4.0	+3.3	+56	+103	+21



Lot 155

YEARLING
155

66 ZODIAC 252M

MALE CKM 252M 2394853 APRIL 27 2024

MC CUMBER BELIEVE 1169 2287583

66 DUCHESS 274F 2058580

MC CUMBER ZODIAC 9119
MISS WIX 9019 OF MC CUMBER

S A V RESOURCE 1441
66 DUCHESS 226B

AOD	BW	205D	EPDs	CE	BW	WW	YW	MILK
7	82	635		+8.0	+0.6	+45	+82	+20



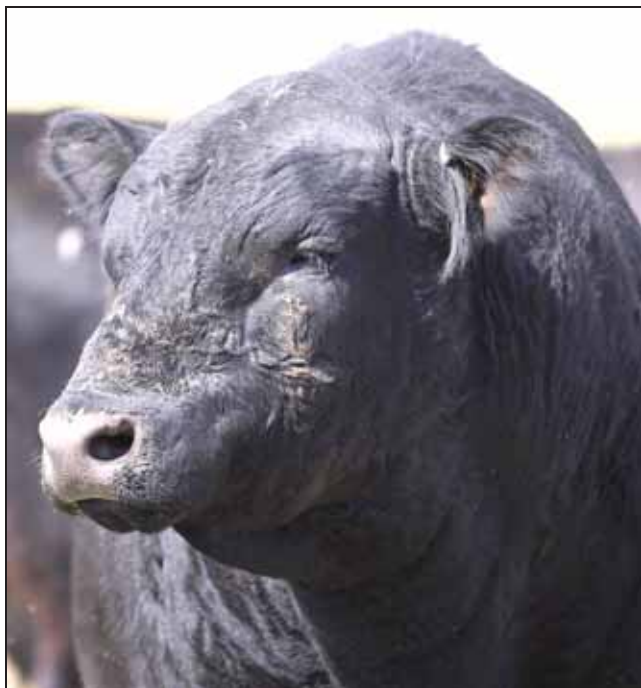
284G - DAM OF LOT 154



274F - DAM OF LOT 155



198D - DAM OF LOT 156



Lot 156

YEARLING
156

66 ZODIAC 272M

MALE CKM 272M 2394859 APRIL 28 2024

MC CUMBER BELIEVE 1169 2287583

66 IDELETTE 198D 1930134

MC CUMBER ZODIAC 9119
MISS WIX 9019 OF MC CUMBER

STUART CHISM 82A
SOUTH FORK IDELETTE 274Z

AOD	BW	205D	EPDs	CE	BW	WW	YW	MILK
9	78	605		+6.0	+1.8	+47	+80	+17



Lot 157

**YEARLING
157**

66 THUNDERSTORM 50M
MALE CKM 50M 2394780 APRIL 17 2024

MERIT THUNDERSTORM 1138J 2243152

BLAIR'S THUNDERSTORM 807F
MERIT FLORA 6078D

66 DUCHESS 180K 2286787

66 CHISM 1D
66 DUCHESS 75B

AOD	BW	205D	EPDs	CE	BW	WW	YW	MILK
3	70	602		+10.0	+0.2	+55	+84	+19



Lot 158

**YEARLING
158**

66 THUNDERSTORM 38M
MALE CKM 38M 2394775 APRIL 16 2024

MERIT THUNDERSTORM 1138J 2243152

BLAIR'S THUNDERSTORM 807F
MERIT FLORA 6078D

66 COUNTESS 159K 2286639

BROOKING REAL ESTATE 6072
66 COUNTESS 465H

AOD	BW	205D	EPDs	CE	BW	WW	YW	MILK
3	81	625		+2.0	+2.8	+53	+93	+27



159K
DAM OF
LOT 158

REFERENCE SIRE



3 sons sell

MERIT THUNDERSTORM 1138J

MALE CRSN 1138J 2243152 MARCH 05 2021

BLAIR'S THUNDERSTORM 807F 2087267

PM THUNDERSTRUCK 22'13
S A V MADAME PRIDE 0151

MERIT FLORA 6078D 1934698

BAR S RANGE BOSS 4002
MERIT FLORA 4120

EPDs	CE	BW	WW	YW	MILK	MCE
	+7.0	+1.8	+51	+83	+25	+9.0

A walking bull here at the ranch purchased from Merit Cattle Co. We purchased 1138J for his moderate birthweight with great growth to use on our first calf heifers. 1138J's sire Thunderstorm 807F has an absolutely outstanding foot under him, with a tremendous amount of heel. His dam Flora 6078D is an ideal of an angus cow as you will find. Impeccable udder. Expect the calves to come easy and grow. And as well, plan to retain the daughters, they will be the kind that will be around a long time! Bull calves average birthweight is 76 lbs. Heifer calves is 72 lbs.



6078D - DAM OF 1138J



Lot 159

**YEARLING
159**

66 THUNDERSTORM 103M
MALE CKM 103M 2394803 APRIL 20 2024

MERIT THUNDERSTORM 1138J 2243152

BLAIR'S THUNDERSTORM 807F
MERIT FLORA 6078D

66 GEORGINA 471K 2291900

66 CEDAR RIDGE 151F
66 GEORGINA 50G

AOD	BW	205D	EPDs	CE	BW	WW	YW	MILK
3	78	712		+8.0	+0.8	+56	+89	+29

REFERENCE SIRE



3 sons sell

MERIT STONEY CREEK 7035E

MALE MSL 7035E 1986184 FEBRUARY 01 2017

MERIT STONEY CREEK 4023 1823867

HF PROWLER 43U
MERIT PRIDE 2010

MERIT BLACKCLASS 1184 1626227

BEVERLY HILLS VISA 734
MERIT BLACKCLASS 5195

EPDs	CE	BW	WW	YW	MILK	MCE
	+4.0	+3.2	+54	+80	+24	+13.0

TWO YEAR OLD SONS SELL AS LOTS 76-77



Lot 160

YEARLING
160

66 STONEY CREEK 173M

MALE CKM 173M 2394826 APRIL 24 2024

MERIT STONEY CREEK 7035E 1986184

MERIT STONEY CREEK 4023
MERIT BLACKCLASS 1184

66 PLUS 41E 2007962

COLE CREEK BLACK CEDAR 1100
66 PLUS 109C

AOD	BW	205D	EPDs	CE	BW	WW	YW	MILK
8	81	706		+6.0	+1.3	+56	+84	+26



41E

DAM OF
LOT 160

REFERENCE SIRE



3 sons sell

MC CUMBER 5005 TITANIUM 1004

EPDs	CE	BW	WW	YW	MILK	MCE
	+6.0	+1.4	+54	+94	+24	+3.0

TWO YEAR OLD SONS SELL AS LOTS 68-69



Lot 161

YEARLING
161

66 TITANIUM 217M

MALE CKM 217M 2394841 APRIL 26 2024

MC CUMBER 5005 TITANIUM 1004 2347800

MC CUMBER TITANIUM 5005
MISS WIX 2012 OF MC CUMBER

66 IDELETTE 240B 1805897

WK BOBCAT
SOUTH FORK IDELETTE 274Z

AOD	BW	205D	EPDs	CE	BW	WW	YW	MILK
11	90	637		+6.0	+2.2	+51	+92	+28



Lot 162

YEARLING
162

66 MOJO 194M

MALE CKM 194M 2405560 ET APRIL 25 2024

KR MOJO 8520 2274196

PANTHER CR INCREDIBLE 6704
KR PRINCESS 6394

MERIT FLORA 14H 2161650

GDAR INSIGHT 7201
MERIT FLORA 6078D

AOD	BW	205D	EPDs	CE	BW	WW	YW	MILK
5	100	699		+6.0	+4.4	+78	+129	+25

REFERENCE SIRE



2 sons sell

KR MOJO 8520

MALE IMP 8520F 2274196 FEBRUARY 05 2018

PANTHER CR INCREDIBLE 6704 2016371

MUSGRAVE INVISION
PANTHER CR JH BLACKBIRD 409

KR PRINCESS 6394 18623025

KRAMERS APOLLO 317
KR PRINCESS 4386

EPDs	CE	BW	WW	YW	MILK	MCE
	+10.0	+1.4	+78	+145	+24	+14.0



Lot 163

YEARLING
163

66 MOJO 28M

MALE CKM 28M 2405558 ET APRIL 15 2024

KR MOJO 8520 2274196

PANTHER CR INCREDIBLE 6704
KR PRINCESS 6394

MERIT FLORA 6078D 1934698

BAR S RANGE BOSS 4002
MERIT FLORA 4120

AOD	BW	205D	EPDs	CE	BW	WW	YW	MILK
9	91	737		+6.0	+3.2	+72	+120	+25



TJL14H
ET DAM
OF
LOT 162

6078D
ET DAM OF
LOT 163



REFERENCE SIRE

DURALTA 8020 ARMORAL 146K

2 sons sell

MALE DFLC 146K 2277034 FEBRUARY 13 2022

MERIT MCLAREN 8020F 2031045

BAR S RANGE BOSS 4002
MERIT BLACKCLASS 6060D

DURALTA 4857B TIBBIE 60F 2045853

S A V CUTTING EDGE 4857
DURALTA TIBBIE 5A

EPDs	CE	BW	WW	YW	MILK	MCE
	+0.0	+3.3	+55	+97	+25	+4.0



Lot 164

YEARLING
164

66 ARMORAL 19M

MALE CKM 19M 2406899 APRIL 14 2024

DURALTA 8020 ARMORAL 146K 2277034

MERIT MCLAREN 8020F
DURALTA 4857B TIBBIE 60F

66 ANNE 395J 2231385

HOOVER DAM
66 ANNE 236G

AOD	BW	205D	EPDs	CE	BW	WW	YW	MILK
4	80	627		+1.5	+2.7	+50	+90	+26



Lot 165

YEARLING
165

66 ARMORAL 249M

MALE CKM 249M 2406895 APRIL 27 2024

DURALTA 8020 ARMORAL 146K 2277034

MERIT MCLAREN 8020F
DURALTA 4857B TIBBIE 60F

66 ERICA 48J 2231249

BROOKING REAL ESTATE 6072
66 ERICA 283G

AOD	BW	205D	EPDs	CE	BW	WW	YW	MILK
4	74	566		+1.5	+2.5	+52	+94	+26



395J

DAM OF
LOT 164



48J

DAM OF
LOT 165



REFERENCE SIRE



3 sons sell

MERIT SHIELD 2030K

MALE CRSN 2030K 2273619 FEBRUARY 07 2022

MC CUMBER ARMOUR 058 2253130

MC CUMBER ARMOUR 7148
MISS WIX 1224 OF MC CUMBER

MERIT COUNTESS 23H 2149448

BAR S RANGE BOSS 4002
MERIT COUNTESS 8114F

EPDs	CE	BW	WW	YW	MILK	MCE
	+8.0	+0.6	+47	+72	+29	+6.0

A walking bull at the ranch purchased from Merit Cattle Co. We selected 2030K to be used on our 1st calf heifers, a calving ease bull with some added performance. 23H, the dam of 2030K, is a beautiful uddered Range Boss daughter out of a Countess cow 8114F that makes herd bulls as well as beautiful daughters. 2030K calved great on our 1st calf heifers. Bull calves average birthweight is 75 lbs. Heifer calves is 68 lbs.



DAM
23H



Lot 157

YEARLING
166

MERIT SHIELD 2030K 2273619

66 ROSEBUD 391K 2286738

AOD	BW	205D	EPDs	CE	BW	WW	YW	MILK
3	72	667		+11.0	-0.3	+51	+83	+29

66 SHIELD 111M

MALE CKM 111M 2398869 APRIL 27 2024

MC CUMBER ARMOUR 058
MERIT COUNTESS 23H

HF SYNDICATE 213Z
66 ROSEBUD 91H



391K
DAM OF
LOT 166



Lot 158

YEARLING
167

MERIT SHIELD 2030K 2273619

66 HAPPENINGS 584K 2291932

66 SHIELD 229M

MALE CKM 229M 2398875 APRIL 26 2024

MC CUMBER ARMOUR 058
MERIT COUNTESS 23H

F-R 5099 8096F

AOD	BW	205D	EPDs	CE	BW	WW	YW	MILK
3	67	617		+11.0	-1.2	+43	+66	+26



199K
DAM OF
LOT 168

YEARLING
168

66 SHIELD 43M

MALE CKM 43M 2398863 APRIL 17 2024

MERIT SHIELD 2030K 2273619

MC CUMBER ARMOUR 058
MERIT COUNTESS 23H

66 DUCHESS 199K 2286663

66 COUNSELOR 23H
66 DUCHESS 446H

AOD	BW	205D	EPDs	CE	BW	WW	YW	MILK
3	74	544		+10.0	-0.2	+42	+69	+26



*Please join us after the sale
for a little country hospitality*



GENETICS FOR THE REAL WORLD

*We use our bulls in our own commercial herd.
We know these genetics are working well for us & they will work for you.*





Where Customers
Become Friends



UPCOMING 66 RANCH SALES

66 RANCH PAIR SALE

MAY 9, 2025 at 1:00 pm
at Bow Slope Shipping, Brooks, AB

Featuring:

50 66 Ranch Registered 2nd calvers with calves at foot
- Selling as Commercial -

50 66 Ranch Home Raised 2nd calvers with calves at foot
* Never before offered, these girls are from our keeper pen! *

150 fancy black commercial 1st calvers
with calves at foot NVB

For more details contact Kelsey @ 403-362-0672

FALL BULL & FEMALE SALE

DECEMBER 10, 2025 at 1:00 pm
at Bow Slope Shipping, Brooks, AB

Featuring:

- Coming 2 Year Old Black Angus Bulls from our May calving program
- 66 Ranch Commercial Bred Heifers NVB
- 66 Ranch Purebred Black Angus Bred Heifers - Selling as Commercial -
- 66 Ranch Commercial 2nd Calvers NVB

Please email or call for details.

Kelsey: 403-362-0672 email: 66@66ranchltd.com

• THANK YOU •

Jordie Buba & Kailey Brandl

for doing such an amazing job of taking pictures, feet photos and videos of the bulls

Rose Currie

for cleaning up the bulls

Jan Lee

for designing the catalog

The Brooks Hotel

for putting on an amazing meal



Thanks for the support!

We want to thank our customers and all who participated in our last bull sale. Your support is greatly appreciated. We look forward to seeing you at our sale. To our new customers, a warm welcome. Whether a bull gets bought or not, we look forward to visiting with all of you after the sale.

Kelsey, Malissa, Brett and Carter



TERMS & CONDITIONS

TERMS - TERMS OF THIS SALE ARE CASH OR CHEQUE PAYABLE IN CANADIAN FUNDS. THE RIGHT TO PROPERTY SHALL NOT PASS UNTIL AFTER SETTLEMENT HAS BEEN MADE. ALL SETTLEMENTS MUST BE MADE WITH THE CLERKS OF THE SALE BEFORE CATTLE WILL BE RELEASED.

BIDS - EVERY ANIMAL ENTERING THE RING WILL BE SOLD TO THE HIGHEST BIDDER; AUCTIONEER'S DECISION WILL BE FINAL.

PURCHASERS RISK - EACH ANIMAL BECOMES THE RISK OF THE PURCHASER AS SOON AS SOLD. INSURANCE WILL BE AVAILABLE SALE DAY.

CATTLE INSPECTION - ALL CATTLE WILL CARRY IDENTIFICATION TAGS CORRESPONDING TO SALE LOT NUMBERS THEY ALSO WILL HAVE R.F.I.D. TAGS.

ANNOUNCEMENTS - ERRORS OR OMISSIONS IN THE CATALOG WILL BE ANNOUNCED BEFORE SALE AND ANY CORRECTIONS WILL TAKE PRECEDENCE OVER PRINTED MATTER IN THE CATALOG.

BREEDING GUARANTEE - ALL CATTLE ARE SOUND AND RIGHT AND SELL WITH "RESPONSIBLE BREEDER GUARANTEE AND SATISFACTION". IN THE EVENT OF AN UNLIKELY DISPUTE, THE REGULAR TERMS AND CONDITIONS STANDARD WITH THE CANADIAN ABERDEEN ANGUS ASSOCIATION SHALL APPLY. IN ANY CASE, THE SELLER IS NOT RESPONSIBLE FOR MORE THAN THE PRICE THE BULL WAS DECLARED SOLD FOR ON SALE DAY.

ACCIDENTS - ANY PERSON ATTENDING THE SALE DOES SO AT THEIR OWN RISK AND RECOGNIZES THAT THERE ARE INHERENT DANGERS. ALTHOUGH EVERY PRECAUTION WILL BE TAKEN TO PROTECT THE SAFETY AND COMFORT OF BUYERS, NEITHER THE SALES MANAGER, AUCTIONEER NOR ANY OWNER ASSUMES ANY RESPONSIBILITY IN THIS MATTER AND DISCLAIMS ANY LIABILITY, LEGAL OR OTHERWISE, IN THE EVENT OF AN ACCIDENT OR LOSS OF PROPERTY.

LIABILITY - PURCHASERS MUST LOOK TO THE SELLER OF ANIMAL FOR FULFILLMENT OF ALL GUARANTEES AND REPRESENTATIONS MADE HEREUNDER. BOW SLOPE SHIPPING ASSOCIATION IS ACTING AS AGENT AND ASSUME NO RESPONSIBILITY FOR REPRESENTATIONS MADE BY THE SELLER.

PHONE, MAIL OR SIGHT UNSEEN BIDS - ALL BIDS WILL BE IN COMPLETE CONFIDENCE WITH SALES STAFF LISTED OR OWNERS.



**PLEASE BRING THIS
CATALOG WITH
YOU TO VIEW THE
BULLS & TO THE SALE**

66 RANCH LTD.

BOX 66

DUCHESS, AB T0J 0Z0

CANADA		POSTES
POST		CANADA
	Postage paid Personalized Mail	Port payé Courrier personnalisé
1013178		

RETURN POSTAGE GUARANTEED
PORT DE RETOUR GARANTI

66 RANCH LTD.

14th Annual

BULL SALE



*Over 60 Years of Family
Ranching Tradition*

*Herd run under
strict range conditions*

www.66RanchLtd.com

1:30 PM WEDNESDAY

APRIL 16 2025

Bow Slope Shipping Association, Brooks, Alberta